

Rabbit Anti-Pentaxin 3 (PTX3) Polyclonal: RC0057

Intended Use: For Research Use Only

Description: Pentraxins are a protein superfamily that is characterized by a cyclic multimeric structure. Ptx3, also known as tumor necrosis factor-stimulated gene sequence-14 (TSG14), is a secreted pattern-recognition receptor that has a non-redundant role in resistance to selected microbial agents. PTX3 belongs to the family of "long pentraxins", which have C-terminal pentraxin domains and novel amino-terminal domains. Ptx3 binds selected pathogens, including *Aspergillus fumigatus*, *Pseudomonas aeruginosa* and *Salmonella typhimurium*. It is synthesized in IgA glomerulonephritis and activates mesangial cells. Secretion of PTX3 in adipose cells can be induced by TNF α . PTX3 is also involved in amplification of inflammatory reactions and regulation of innate immunity. The human PTX3 gene maps to chromosome 3q25.

Specifications

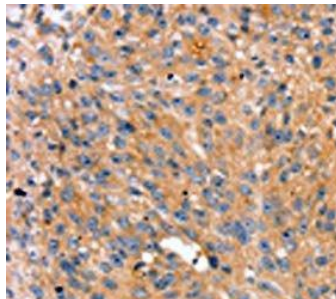
Clone: Polyclonal
 Source: Rabbit
 Isotype: IgG
 Reactivity: Human, mouse
 Immunogen: Synthesized peptide derived from the N-terminal region of human PTX3
 Localization: Secreted
 Formulation: Purified antibody in PBS pH7.4, containing BSA and $\leq 0.09\%$ sodium azide (NaN₃)
 Storage: Store at 2°- 8°C
 Applications: IHC, ICC/IF, WB
 Package:

Description	Catalog No.	Size
Pentaxin 3 (PTX3) Polyclonal Concentrated	RC0057	1 ml

IHC Procedure*

Positive Control Tissue: Placenta, breast cancer, esophagus cancer
 Concentrated Dilution: 10-100
 Pretreatment: Tris EDTA pH9.0, 15 minutes Pressure Cooker or 30-60 minutes water bath at 95°-99°C
 Incubation Time and Temp: Overnight @ 4°C
 Detection: Refer to the detection system manual

* Result should be confirmed by an established diagnostic procedure.



FFPE human breast cancer stained with anti-PTX3 using DAB

References:

1. Mesenchymal stem cells induce tumor stroma formation and epithelial-mesenchymal transition through SPARC expression in colorectal cancer. Naito T, et al. *Oncol Rep* 45:N/A, 2021.
2. Characterization of the long pentraxin PTX3 as a TNF α -induced secreted protein of adipose cells. Abderrahim-Ferkoune, A., et al. *J Lipid Res.* 44: 994-1000, 2003.
3. Non-redundant role of the long pentraxin PTX3 in anti-fungal innate immune response. Garlanda, C., et al. *Nature.* 420: 182-6, 2002.