

Mouse Anti-CCR6/CD196 [ZY912]: MC0624

Intended Use: For Research Use Only

Description: Pleomorphic adenoma gene 1 encodes a zinc finger protein with 2 putative nuclear localization signals. PLAG1, which is developmentally regulated, has been shown to be consistently rearranged in pleomorphic adenomas of the salivary glands. PLAG1 is activated by the reciprocal chromosomal translocations involving 8q12 in a subset of salivary gland pleomorphic adenomas. Three transcript variants encoding two different isoforms have been found for this gene.

Specifications:

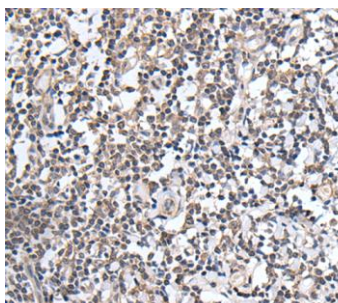
Clone: ZY912
Source: Mouse
Isotype: IgG1
Reactivity: Human, mouse, rat
Immunogen: KLH conjugated synthetic peptide derived from human PLAG1 21-120/500 aa
Localization: Nucleus
Formulation: Purified antibody in PBS pH7.4, containing BSA and $\leq 0.09\%$ sodium azide (NaN₃)
Storage: Store at 2°- 8°C
Applications: IHC, ELISA, IF, WB
Package:

Description	Catalog No.	Size
CCR6/CD196 [ZY912] Concentrated	MC0624	1 ml

IHC Procedure*:

Positive Control Tissue: Astrocytoma and ovarian cancer, cerebrum tissue
Concentrated Dilution: 10-100
Pretreatment: Tris EDTA pH9.0, 15 minutes Pressure Cooker or 30-60 minutes water bath at 95°-99°C
Incubation Time and Temp: Overnight at 4°C
Detection: Refer to the detection system manual

* Result should be confirmed by an established diagnostic procedure.



FFPE human tonsil stained with anti-CCR6 using AEC

References:

1. CCR6 expression in colon cancer is associated with advanced disease and supports epithelial-to-mesenchymal transition. Neeraj Kapur, et al. Br J Cancer. Jun 14;114(12):1343-51, 2016.
2. The Immunohistochemical Expression of CCR6 in Primary Human Uveal Melanoma. V. Bravo; et al. Investigative Ophthalmology & Visual Science May Vol.47, 2240, 2006.