

Rabbit Anti-CCL20/MIP3 Alpha Polyclonal: RC0051

Intended Use: For Research Use Only

Description: This antimicrobial gene belongs to the subfamily of small cytokine CC genes. Cytokines are a family of secreted proteins involved in immunoregulatory and inflammatory processes. The CC cytokines are proteins characterized by two adjacent cysteines. The protein encoded by this gene displays chemotactic activity for lymphocytes and can repress proliferation of myeloid progenitors. Two transcript variants encoding different isoforms have been found for this gene. Chemotactic factor that attracts lymphocytes and, slightly, neutrophils, but not monocytes. Inhibits proliferation of myeloid progenitors in colony formation assays. May be involved in formation and function of the mucosal lymphoid tissues by attracting lymphocytes and dendritic cells towards epithelial cells. C-terminal processed forms have been shown to be equally chemotactically active for leukocytes.

Specifications:

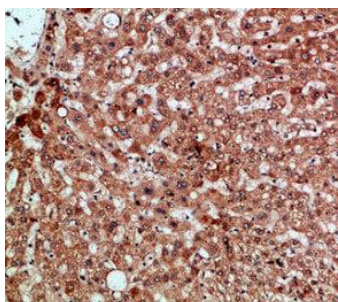
Clone: Polyclonal
 Source: Rabbit
 Isotype: IgG
 Reactivity: Human, mouse
 Immunogen: Synthetic peptide of human protein aa 31-80
 Localization: Secreted
 Formulation: Purified antibody in PBS pH7.4, containing BSA and $\leq 0.09\%$ sodium azide (NaN₃)
 Storage: Store at 2°- 8°C
 Applications: IHC, ELISA
 Package:

Description	Catalog No.	Size
CCL20/MIP3 Alpha Polyclonal Concentrated	RC0051	1 ml

IHC Procedure*:

Positive Control Tissue: Liver, pancreas, tonsil, colon
 Concentrated Dilution: 10-50
 Pretreatment: Tris EDTA pH9.0, 15 minutes Pressure Cooker or 30-60 minutes water bath at 95°-99°C
 Incubation Time and Temp: Overnight at 4°C
 Detection: Refer to the detection system manual

* Result should be confirmed by an established diagnostic procedure.



FFPE human liver stained with anti-CCL20 using AEC

References:

1. Tumor-associated macrophage-derived CCL20 enhances the growth and metastasis of pancreatic cancer. Bingyan Liu, et al. Acta Biochim Biophys Sin. Dec;48(12):1067-1074, 2016.
2. Expression of CCL20 and Its Corresponding Receptor CCR6 Is Enhanced in Active Inflammatory Bowel Disease, and TLR3 Mediates CCL20 Expression in Colonic Epithelial Cells. Helene Kolstad Skovdahl, et al. PLoS One. 10(11): e0141710, 2015.
3. High expression of CCL20 is associated with poor prognosis in patients with hepatocellular carcinoma after curative resection. Xiangjiu Ding, et al. J Gastrointest Surg. Apr;16(4):82. 8-36, 2012.

Doc. 100-RC0051
Rev. A