

Mouse Anti-HLA-ABC (MHC I) [ICO-53]: MC0512

Intended Use: For Research Use Only

Description: Reacts with a monomorphic determinant of human major histocompatibility (MHC) class I antigens (HLA-A, B and C). Human MHC class I antigens are expressed constitutively on all nucleated cells lymphocytes such as lymphocytes, thymocytes, granulocytes, and bone marrow cells and are absent on erythrocytes. MHC class I antigens play a role in class I MHC-associated antigen presentation, inhibition of NK cell cytotoxicity, tumor surveillance, and tissue allotransplantation.

Specifications:

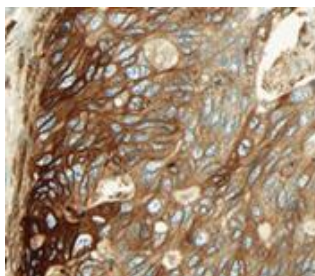
Clone:	ICO-53
Source:	Mouse
Isotype:	IgG2a
Reactivity:	Human
Immunogen:	HLA-ABC on all Leukocytes
Localization:	Membrane
Formulation:	Antibody in PBS pH7.4, containing BSA and $\leq 0.09\%$ sodium azide (NaN ₃)
Storage:	Store at 2°- 8°C
Applications:	IHC, Flow Cyt.
Package:	

Description	Catalog No.	Size
HLA-ABC (MHC I) Concentrated	MC0512	1 ml

IHC Procedure*:

Positive Control Tissue:	Tonsil, lymph node
Concentrated Dilution:	25-100
Pretreatment:	Tris EDTA pH9.0, 15 minutes Pressure Cooker or 30-60 minutes water bath at 95°-99°C
Incubation Time and Temp:	30-60 minutes @ RT
Detection:	Refer to the detection system manual

* Result should be confirmed by an established diagnostic procedure.



FFPE human CRC stained with anti-HLA-ABC using DAB

References:

1. Composition and Clinical Impact of the Immunologic Tumor Microenvironment in Oral Squamous Cell Carcinoma. Boxberg M, et al. J Immunol 202:278-291, 2019.
2. Mutational activation of the epidermal growth factor receptor down-regulates major histocompatibility complex class I expression via the extracellular signal-regulated kinase in non-small cell lung cancer. Watanabe S, et al. Cancer Sci 110:52-60, 2019.
3. Immune profiles of desmoplastic small round cell tumor and synovial sarcoma suggest different immunotherapeutic susceptibility upfront compared to relapse specimens. Wedekind MF, et al. Pediatr Blood Cancer 65:e27313, 2018.