

Mouse Anti-IgA [rHISA43]: MC0811, MC0811RTU7

Intended Use: For Research Use Only

Description: Immunoglobulins are produced by cells of the B-lymphocyte lineage. Based on differences in the heavy chain, five immunoglobulin isotypes are known as IgA, IgG, IgM, IgD and IgE. IgA is the predominant immunoglobulin for mucosal immunity. It is found abundantly in mucosal tissues, such as gut, respiratory tract and urogenital tract. It is also found in saliva, tears and breast milk. An antibody to IgA is useful for the identification and classification of B cell derived lymphomas and plasmacytomas.

Specifications:

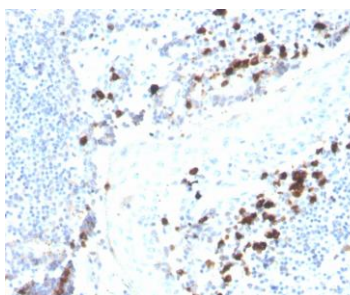
Clone: rHISA43
 Source: Mouse
 Isotype: IgG1k
 Reactivity: Human
 Immunogen: Recombinant full-length human IGHA1 and IGHA2 proteins
 Localization: Cytoplasm, membrane
 Formulation: Purified antibody in PBS pH7.4, containing BSA and ≤ 0.09% sodium azide (NaN₃)
 Storage: Store at 2°- 8°C
 Applications: IHC
 Package:

Description	Catalog No.	Size
IgA Concentrated	MC0811	1 ml
IgA Prediluted	MC0811RTU7	7 ml

IHC Procedure*:

Positive Control Tissue: Tonsil
 Concentrated Dilution: 50-200
 Pretreatment: Tris EDTA pH9.0, 15 minutes Pressure Cooker or 30-60 minutes water bath at 95°-99°C
 Incubation Time and Temp: 30-60 min @ RT
 Detection: Refer to the detection system manual

* Result should be confirmed by an established diagnostic procedure.



FFPE human tonsil stained with anti-IgA using DAB

References

1. Aberrant RL2 O-GlcNAc antibody reactivity against serum-IgA1 of patients with colorectal cancer. Verathamjamras C, et al. Glycoconj J 38:55-65, 2021.
2. CVID enteropathy is characterized by exceeding low mucosal IgA levels and interferon-driven inflammation possibly related to the presence of a pathobiont. Shulzhenko N, et al. Clin Immunol 197:139-153, 2018.
3. Differential binding of IgG and IgA to mucus of the female reproductive tract. Fahrbach KM, et al. PLoS One 8:e76176, 2013.

Doc. 100-MC0811
Rev. C