

**Mouse Anti-CXCL10/IP10/Interferon gamma induced protein 10 [IP10-1]: MC0585, MC0585RTU7**

**Intended Use:** For Research Use Only

**Description:** CXCL10 or IP10 is a member of the CXC chemokine family which binds to the CXCR3 receptor to exert its biological effects. CXCL10 is a 12-kDa protein and constitutes two internal disulfide cross bridges. The predicted signal peptidase cleavage generates a 10-kDa secreted polypeptide with four conserved cysteine residues in the N-terminal. The CXCL10 gene localizes on chromosome 4 at band q21, a locus associated with an acute monocytic/B-lymphocyte lineage leukemia exhibiting translocation of t (4; 11) (q21; q23). CXCL10 mediates leukocyte trafficking, adaptive immunity, inflammation, haematopoiesis and angiogenesis. Under proinflammatory conditions CXCL10 is secreted from a variety of cells, such as leukocytes, activated neutrophils, eosinophils, monocytes, epithelial cells, endothelial cells, stromal cells (fibroblasts) and keratinocytes in response to IFN- $\gamma$ .

**Specifications:**

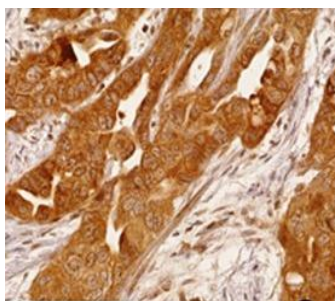
Clone: IP10-1  
 Source: Mouse  
 Isotype: IgG2b/k  
 Reactivity: Human  
 Immunogen: Recombinant CXCL10 of human origin  
 Localization: Secreted  
 Formulation: Antibody in PBS pH7.4, containing BSA and  $\leq$  0.09% sodium azide (NaN<sub>3</sub>)  
 Storage: Store at 2°- 8°C  
 Applications: IHC, IF, WB  
 Package:

Description	Catalog No.	Size
CXCL10/IP10/Interferon gamma induced protein 10 Concentrated	MC0581	1 ml
CXCL10/IP10/Interferon gamma induced protein 10 Prediluted	MC0581RTU7	7 ml

**IHC Procedure\*:**

Positive Control Tissue: Ovarian ca, brain, uterus  
 Concentrated Dilution: 50-200  
 Pretreatment: Tris EDTA pH9.0, 15 minutes Pressure Cooker or 30-60 minutes water bath at 95°-99°C  
 Incubation Time and Temp: 30-60 minutes @ RT  
 Detection: Refer to the detection system manual

\* Result should be confirmed by an established diagnostic procedure.



FFPE human high-grade serous ovarian cancer stained with anti-CXCL10 using DAB

**References:**

1. Immunohistochemical expression and localization of cytokines/chemokines/growth factors in gastric cancer. | Cytokine. 89: 82-90, 2017.
2. Bullous pemphigoid outcome is associated with CXCL10-induced matrix metalloproteinase 9 secretion from monocytes and neutrophils but not lymphocytes. | Riani, M. et al. The Journal of allergy and clinical immunology. Mar;139(3):863-872.e3, 2017.
3. CXCL9 and CXCL10 predict survival and are regulated by cyclooxygenase inhibition in advanced serous ovarian cancer. | Bronger, H. et al. British journal of cancer. 115: 553-63, 2016.

Doc. 100-MC0585  
Rev. A