

**Rabbit Anti-Uroplakin II [MD275R]: RM0458, RM0458RTU7**

**Intended Use:** For Research Use Only

**Description:** Uroplakin II is a 15 kDa protein component of urothelial plaques. Studies have shown Uroplakin II mRNA was highly specific and was expressed in both bladder cancer tissues and peripheral blood of patients with primary and metastatic urothelial carcinoma of the bladder. Uroplakin II is a highly specific and may be useful in identifying tumors of urothelial origin.

**Specifications**

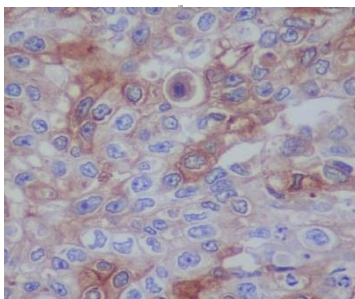
Clone: MD275R  
Source: Rabbit  
Isotype: IgG  
Reactivity: Human  
Immunogen: Recombinant fragment of human Uroplakin II  
Localization: Membrane  
Formulation: Antibody in PBS pH7.4, containing BSA and  $\leq 0.09\%$  sodium azide (NaN<sub>3</sub>)  
Storage: Store at 2°- 8°C  
Applications: IHC  
Package:

Description	Catalog No.	Size
Uroplakin II Concentrated	RM0458	1 ml
Uroplakin II Prediluted	RM0458RTU7	7 ml

**IHC Procedure\***

Positive Control Tissue: Bladder, urothelial carcinoma  
Concentrated Dilution: 50-200  
Pretreatment: Tris EDTA pH9.0, 15 minutes Pressure Cooker or 30-60 minutes water bath at 95°-99°C  
Incubation Time and Temp: 30-60 minutes @ RT  
Detection: Refer to the detection system manual

\* Result should be confirmed by an established diagnostic procedure.



FFPE human bladder carcinoma stained with anti-Uroplakin II using DAB

**References:**

1. Uroplakin II Expression in Breast Carcinomas Showing Apocrine Differentiation: Putting Some Emphasis on Invasive Pleomorphic Lobular Carcinoma as a Potential Mimic of Urothelial Carcinoma at Metastatic Sites. Shogo Tajima, et al. Dis Markers. 2016: 2940496, 2016.
2. Uroplakin II Outperforms Uroplakin III in Diagnostically Challenging Settings. Smith SC, et al. Histopathology. Jan2, 2014.