

Rabbit Anti-STMN1/Stathmin1 [MD272R]: RM0318, RM0318RTU7

Intended Use: For Research Use Only

Description: Stathmin1 or STMN1 is a ubiquitous cytosolic phosphoprotein proposed to function as an intracellular relay integrating regulatory signals of the cellular environment. The encoded protein is involved in the regulation of the microtubule filament system by destabilizing microtubules. It prevents assembly and promotes disassembly of microtubules. Alternatively spliced transcript variants encoding the same protein have been identified.

Specifications

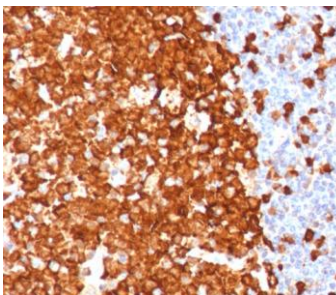
Clone: MD272R
Source: Rabbit
Isotype: IgG
Reactivity: Human
Immunogen: Recombinant fragment of human STMN1 protein
Localization: Cytoplasm
Formulation: Purified antibody in PBS pH7.4, containing BSA and $\leq 0.09\%$ sodium azide (NaN₃)
Storage: Store at 2°- 8°C
Applications: IHC
Package:

| Description | Catalog No. | Size |
|------------------------------|-------------|------|
| STMN1/Stathmin1 Concentrated | RM0318 | 1 ml |
| STMN1/Stathmin1 Prediluted | RM0318RTU7 | 7 ml |

IHC Procedure*

Positive Control Tissue: Tonsil, spleen, breast cancer
Concentrated Dilution: 50-200
Pretreatment: Tris EDTA pH9.0, 15 minutes Pressure Cooker or 30-60 minutes water bath at 95°-99°C
Incubation Time and Temp: 30-60 minutes @ RT
Detection: Refer to the detection system manual

* Result should be confirmed by an established diagnostic procedure.



FFPE human tonsil tissue stained with anti-STMN1 using DAB

References:

1. STMN-1 gene: a predictor of survival in stage iia esophageal squamous cell carcinoma after Ivor-Lewis esophagectomy? Akhtar J, et al. Ann Surg Oncol. Jan;21(1):315-21, 2014.
2. Overexpression of stathmin1 in the diffuse type of gastric cancer and its roles in proliferation and migration of gastric cancer cells. Jeon TY, et al. Br J Cancer. Feb 16;102(4):710-8, 2010.
3. A cohort study of STMN1 expression in colorectal cancer: body mass index and prognosis.Ogino S, et al. Am J Gastroenterol. Aug;104(8):2047-56, 2009.