

Rabbit Anti-TFE3 [MD227R]: RM0401, RM0401RTU7

Intended Use: For Research Use Only

Description: Xp11 translocation renal cell carcinoma (RCC) is a recently recognized subset of RCC, characterized by chromosome translocations involving the Xp11.2 break point and resulting in gene fusions involving the TFE3 transcription factor gene that maps to this locus. The most sensitive and specific immunohistochemical marker for the Xp11 translocation RCC is nuclear labeling of TFE3 protein, which reflects over-expression of the resulting fusion proteins relative to TFE3. Alveolar soft part sarcoma (ASPS) is an uncommon soft tissue sarcoma which affects predominantly young patients, often in the extremities. The diagnosis of ASPS can be problematic due to histologic overlap with other tumors, particularly in small biopsies, as well as when the detection of a metastasis is prior to identification of a primary, or when presenting at unusual primary sites such as bone. Carcinomas can be separated by the expression of cytokeratins. Paraganglioma shows very strong positivity with anti-synaptophysin. Melanomas can be distinguished by strong positivity with antibodies against HMB-45, S100, and Melan A. These markers generally are all negative in ASPS. Anti-TFE3 has been shown to be highly specific and sensitive for ASPS.

Specifications:

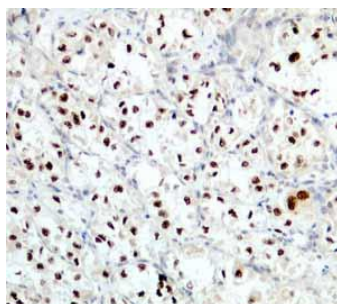
Clone:	MD227R
Source:	Rabbit
Isotype:	IgG
Reactivity:	Human
Localization:	Nucleus
Formulation:	Antibody in PBS pH7.4, containing BSA and $\leq 0.09\%$ sodium azide (NaN ₃)
Storage:	Store at 2° - 8°C
Applications:	IHC
Package:	

Description	Catalog No.	Size
TFE3 Concentrated	RM0401	1 ml
TFE3 Prediluted	RM0401RTU7	7 ml

IHC Procedure*:

Positive Control Tissue:	Melanoma, ASPS
Concentrated Dilution:	50-200
Pretreatment:	Tris EDTA pH9.0, 15 minutes Pressure Cooker or 30-60 minutes water bath at 95°-99°C
Incubation Time and Temp:	30-60 minutes @ RT
Detection:	Refer to the detection system manual

* Result should be confirmed by an established diagnostic procedure.



FFPE human RCC stained with anti-TFE3 using DAB

References:

1. TFE3 translocation-associated perivascular epithelioid cell neoplasm (PEComa) of the gynecologic tract: morphology, immunophenotype, differential diagnosis. Schoolmeester JK, et al. Am J Surg Pathol. Mar;39(3):394-404, 2015.
2. Establishment of an ASPL-TFE3 renal cell carcinoma cell line (S-TFE). Hirobe M, et al. Cancer Biol Ther. Jun; 14(6): 502-10, 2013.