

Rabbit Anti-FOLR1/FR α /FBP [MD255R]: RM0152, RM0152RTU7

Intended Use: For Research Use Only

Description: FOLR1 (folate receptor 1), also known as FR α (folate receptor alpha) or FBP (folate binding protein), is a 38-40 kDa glycosylphosphatidylinositol (GPI)-anchored cell surface protein encoded by the FOLR1 gene. Folate receptor alpha is primarily expressed in the apical surface of some polarized epithelial cells of normal tissues (such as kidney, lung, breast, and salivary glands) and on malignant tumors such as epithelial ovarian cancer (EOC), thyroid cancer, non-small cell lung adenocarcinoma (NSCLC) and endometrial cancer. Studies show that the expression of FOLR1 in EOC increases with tumor stage, and is associated with decreased survival. In NSCLC, FOLR1 has been shown to be specific for adenocarcinomas relative to squamous cell carcinoma and other histologic subtypes, and increased expression has been correlated to increased survival. FOLR1 has been exploited as a target for specific delivery of chemotherapy and immunotherapy agents. This antibody specifically recognizes human FOLR1.

Specifications

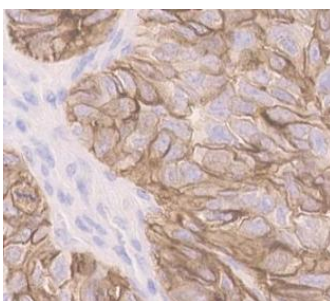
Clone: MD255R
Source: Rabbit
Isotype: IgG
Reactivity: Human, mouse, rat
Immunogen: Synthetic peptide of human FOLR1
Localization: Membrane, cytoplasm
Formulation: Antibody in PBS pH 7.4, containing BSA and $\leq 0.09\%$ sodium azide (NaN₃)
Storage: Store at 2°- 8°C
Applications: IHC, WB
Package:

Description	Catalog No.	Size
FOLR1/FR α /FBP Concentrated	RM0152	1 ml
FOLR1/FR α /FBP Prediluted	RM0152RTU7	7 ml

IHC Procedure*

Positive Control Tissue: Adenocarcinoma (breast, lung, endometrial and ovarian), kidney, salivary glands
Concentrated Dilution: 50-200
Pretreatment: Tris EDTA pH 9.0, 15 minutes Pressure Cooker or 30-60 minutes water bath at 95°-99°C
Incubation Time and Temp: 30-60 minutes @ RT
Detection: Refer to the detection system manual

* Result should be confirmed by an established diagnostic procedure.



FFPE human ovarian cancer stained with anti-FOLR1 using DAB

References:

1. Effects of valproate, an HDAC inhibitor, on the expression of folate carriers and folate metabolism-related genes in the placenta of rats. Furugen A, et al. Drug Metab Pharmacokinet 40:100409, 2021.
2. Mouse Ovarian Cancer Models Recapitulate the Human Tumor Microenvironment and Patient Response to Treatment. Maniati E, et al. Cell Rep 30:525-540.e7, 2020.

Doc. 100-RM0152
Rev. A