

**Rabbit Anti-Claudin 6 [MD233R]: RM0090, RM0090RTU7**

**Intended Use:** For Research Use Only

**Description:** Claudin 6, a member of the Claudin family that is expressed in epithelial cell sheets, is an intercellular adhesion molecule that develops tight junctions all around cells and controls epidermal permeability, restricting the free passage of solutes and water via cells. Downregulation of Claudin 6 has been reported in breast invasive ductal carcinoma associated with lymphatic metastasis which may point to a function of Claudin 6 as a tumor suppressor. Claudin 6 is reported to play a role in inhibiting malignancy of breast cancer cells by inducing apoptosis, inhibiting proliferation and migration. Regulation of Claudin 6 expression may occur through epigenetic mechanisms. Other reports describe aberrant expression in various malignancies.

**Specifications:**

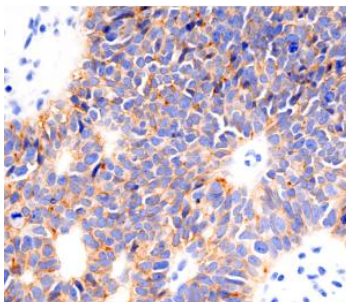
Clone: MD233R  
 Source: Rabbit  
 Isotype: IgG  
 Reactivity: Human  
 Immunogen: Synthetic peptide of human Claudin 6 protein corresponding to residues surrounding Val220  
 Localization: Membrane  
 Formulation: Antibody in PBS pH7.4, containing BSA and  $\leq 0.09\%$  sodium azide (NaN<sub>3</sub>)  
 Storage: Store at 2°- 8°C  
 Applications: IHC, WB  
 Package:

Description	Catalog No.	Size
Claudin 6 [MD233R] Concentrated	RM0090	1 ml
Claudin 6 [MD233R] Prediluted	RM0090RTU7	7 ml

**IHC Procedure\*:**

Positive Control Tissue: Ovary  
 Concentrated Dilution: 10-100  
 Pretreatment: Tris EDTA pH9.0, 15 minutes Pressure Cooker or 30-60 minutes water bath at 95°-99°C  
 Incubation Time and Temp: 30-60 minutes @ RT  
 Detection: Refer to the detection system manual

\* Result should be confirmed by an established diagnostic procedure.



FFPE human papillary serous ovarian cancer stained with anti-Claudin 6 using DAB

**References:**

1. Human hepatic stellate cells are not permissive for hepatitis C virus entry and replication. Florimond A, et al. Gut N/A:N/A (2014).
2. Aberrantly activated claudin 6 and 18.2 as potential therapy targets in non-small-cell lung cancer. Patrick Micke, et al. Int J Cance. Nov 1;135(9):2206-14, 2014. doi: 10.1002/ijc.28857.
3. The claudin gene family: expression in normal and neoplastic tissues. Kyle J Hewitt, et al. BMC Cancer. Jul 12;6:186, 2006. doi: 10.1186/1471-2407-6-186.