

**Rabbit Anti-p40 [MD6R]: RM0260, RM0260RTU7**

**Intended Use:** For Research Use Only

**Description:** p63 consists of two major isoforms-TAp63 and ΔNp63. These isoforms differ in the structure of the Nterminal domains. The TAp63 isoform (identified by anti-p63 antibody) contains a transactivation-competent ‘TA’ domain with homology to p53, which regulates the expression of the growth-inhibitory genes. In contrast, ΔNp63 isoform (identified by anti-p40 antibody) contains an alternative transcriptionally-inactive ‘ΔN’ domain, which antagonizes the activity of TAp63 and p53. The p40 (clone ZR8) antibody recognizes exclusively ΔNp63 but not TAp63. p40 is a squamous cell carcinoma ‘specific’ antibody. It reacts with the vast majority of cases of squamous cell carcinomas of various origins, but not with adenocarcinomas. It is particularly useful in differentiating lung squamous cell carcinoma from lung poorly differentiated denocarcinoma. p40 antibody can also be used as an alternative basal cell/myoepithelial cell marker, which has similar sensitivity and specificity as that of p63 antibody. Therefore, p40 antibody may also be used as an alternative immunohistochemical marker for determining prostate adenocarcinoma vs. benign prostate glands and for determining breast intraductal carcinoma vs. invasive breast ductal carcinoma.

**Specifications**

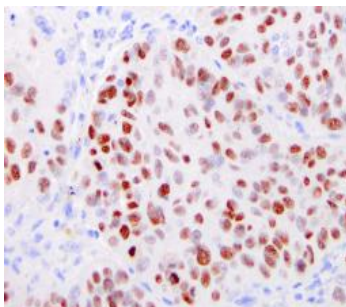
|               |   |
|---------------|---|
| Clone:        | MD6R  |
| Source:       | Rabbit  |
| Isotype:      | IgG   |
| Reactivity:   | Human   |
| Immunogen:    | Synthetic peptide corresponding to aa 5-17 of human p63 protein       |
| Localization: | Nucleus   |
| Formulation:  | Antibody in PBS pH7.4, containing BSA and ≤ 0.09% sodium azide (NaN3) |
| Storage:      | Store at 2°- 8°C  |
| Applications: | IHC   |
| Package:      |   |

| Description      | Catalog No. | Size |
|------------------|-------------|------|
| p40 Concentrated | RM0260      | 1 ml |
| p40 Prediluted   | RM0260RTU7  | 7 ml |

**IHC Procedure\***

|                           |   |
|---------------------------|---|
| Positive Control Tissue:  | Lung SCC  |
| Concentrated Dilution:    | 50-200  |
| Pretreatment:             | Citrate pH6.0 or EDTA pH8.0, 15 min Pressure Cooker or 30-60 min water bath at 95°-99°C |
| Incubation Time and Temp: | 30-60 minutes @ RT  |
| Detection:                | Refer to the detection system manual  |

\* Result should be confirmed by an established diagnostic procedure.



FFPE human lung squamous cell carcinoma stained with anti-p40 using DAB

**References:**

1. ΔNp63 (p40) expression in prostatic adenocarcinoma with diffuse p63 positivity. Uchida K, et al. Hum Pathol. 2015 Mar;46(3):384-9, 2015.
2. p40 is a more specific marker than p63 for cutaneous poorly differentiated squamous cell carcinoma. Alomari AK, et al. J Cutan Pathol. Nov;41(11):839-45, 2014.