

Mouse Anti-hGAL (GCET2) [MD190]: MC0446, MC0446RTU7

Intended Use: For Research Use Only

Description: This gene encodes a protein which may function in signal transduction pathways and whose expression is elevated in germinal cell lymphomas. It contains a putative PDZ-interacting domain, an immunoreceptor tyrosine-based activation motif (ITAM), and two putative SH2 binding sites. In B cells, its expression is specifically induced by interleukin-4. Alternative splicing results in multiple transcript variants encoding different isoforms. Expressed in diffuse large B-cell lymphoma (DLBCL) and several germinal center (GC)-like lymphoma cell lines (at protein level). Highly expressed in normal GC lymphocytes and GC-derived malignancies. Expressed in thymus and spleen.

Specifications

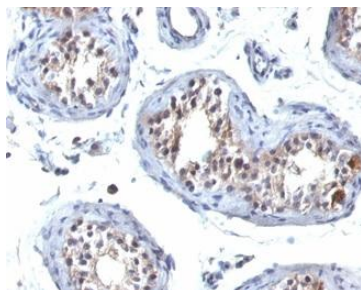
Clone:	MD190
Source:	Mouse
Isotype:	IgG1k
Reactivity:	Human
Immunogen:	Recombinant fragment 178 amino acid residues aa1-200) of human HGAL protein
Localization:	Cytoplasm, membrane
Formulation:	Purified antibody in PBS pH7.4, containing 0.2% BSA and ≤ 0.09% sodium azide (NaN3)
Storage:	Store at 2°- 8°C
Applications:	IHC
Package:	

Description	Catalog No.	Size
hGAL (GCET2) Concentrated	MC0446	1 ml
hGAL (GCET2) Prediluted	MC0446RTU7	7 ml

IHC Procedure

Positive Control:	Non Hodgkin's or diffuse large B-cell lymphoma
Concentrated Dilution:	50-200
Pretreatment:	Tris EDTA pH9.0, 15 minutes using Pressure Cooker, or 30-60 minutes using water bath at 95°-99°C
Incubation Time and Temp:	30-60 minutes @ RT
Detection:	Refer to the detection system manual

* Result should be confirmed by an established diagnostic procedure.



FFPE human testis stained with anti-hGAL using DAB

References:

1. The contribution of HGAL/GCET2 in immunohistological algorithms: a comparative study in 424 cases of nodal diffuse large B-cell lymphoma. Gualco G, et al. Mod Pathol. Nov;25(11):1439-45, 2012.
2. Comparison of germinal center markers CD10, BCL6 and human germinal center-associated lymphoma (HGAL) in follicular lymphomas. Goteri G, et al. Diagn Pathol. Oct 11;6:97, 2011.
3. Expression of HGAL in primary cutaneous large B-cell lymphomas: evidence for germinal center derivation of primary cutaneous follicular lymphoma. Xie X, et al. Mod Pathol. Jun;21(6):653-9, 2008.
4. Expression of the human germinal center-associated lymphoma (HGAL) protein, a new marker of germinal center B-cell derivation. Natkunam Y, et al. Blood. May 15;105(10):3979-86, 2005.

Doc. 100-MC0446
Rev. B