

Ultra-Sensitive IDH1 Mutation Detection Kit

User Manual

Catalog Number:	IDH10001-20	IDH10001-50
Size:	20 tests/Kit	50 tests/Kit

Intended Use: For Research Use Only

Doc. No.: 100-IDH10001
Revision: Rev. D

1.	PRODUCT INFORMATION	3
1.1	Background	3
1.2	Intended use	3
2.	KIT CONTENT	3
3.	SHIPPING AND STORAGE	3
4.	PRECAUTIONS FOR USE.....	3
5.	ADDITIONAL REAGENTS AND INSTRUMENTS REQUIRED	3
5.1	Reagents	3
5.2	Materials.....	4
5.3	Instruments	4
6.	PRODUCT DESCRIPTION AND PRICINPLE	4
7.	PROTOCOL	5
7.1	DNA preparation	5
7.2	DNA quality control preparation.....	6
7.3	PCR reaction preparation	6
7.4	PCR thermal cycling condition	6
7.5	Run PCR gel eletrophoresis (optional).....	7
7.6	Recommended Sanger sequencing protocol.....	7
8.	DATA ANALYSIS.....	7
9.	TROUBLESHOOTING GUIDE	9
10.	REFERENCE	9

1. PRODUCT INFORMATION

1.1 Background

Isocitrate dehydrogenase 1/2, also called IDH1/2, is a key enzyme of TCA cycle and catalyzes the oxidative decarboxylation of isocitrate to α -Ketoglutaric acid and CO₂. Mutations in exon 4 of the IDH1/2 are associated with development of numerous cancers, such as glioma, acute myeloid leukemia (AML), chondrosarcoma, intrahepatic cholangiocarcinoma (ICC), and angioimmunoblastic T-cell lymphoma. IDH1/2 mutations are also considered as prognostic markers for survival and predict response to chemotherapy in low-grade gliomas. (1 - 3)

1.2 Intended use

Medaysis Ultra-Sensitive IDH1 Mutation Detection Kit is a highly specific and sensitive PCR technique that is able to detect common somatic mutations in the IDH1 gene. Used with Sanger sequencing, it can detect less than 1% (as little as 20 ng to 100 ng of) mutant genes mixed with the wild-type (Table 1). It is designed to amplify IDH1 gene from formalin-fixed paraffin-embedded (FFPE) tissues, fresh or frozen tissues, cell smears, fine needle biopsies (FNA), pleural effusion specimens and plasma samples. The mutation screen kit can be used to aid to determine the IDH1 gene profiling and provide clinicians additional information of gene sequence identity. The mutation screen kit should not be used for diagnosis alone, further analysis would be required.

Sample quality assurance for diagnostic tests has not been widely implemented in clinical laboratories.

Table 1. IDH1 mutations detected by the kit:

No	Reagents	Exon	Amino Acid Range
1	IDH1 Exon 4 Primer mix	4	R132

2. KIT CONTENT

List of components *:

No.	Catalog Number	Name of Components	Volume (µl)	
			IDH10001-20	IDH10001-50
1	IDH10021	IDH1 Exon 4 PCR primer mix	90	225
2**	IDH10041	IDH1 Exon 4 Seq primer-R	25	60
3	SQC0021	DNA Quality Control Primer Mix	90	225
4	OTH0001	2x PCR Master Mix	450	600
5	OTH0002	Nuclease-Free Water	1000	1000

* Each component contains enough material to test 20 or 50 DNA samples

** R = reverse sequencing primer for Sanger sequencing

3. SHIPPING AND STORAGE

Medaysis IDH1 mutation detection kit is shipped at 4°C and recommends being store at -20°C for long-term storage. When stored under the recommended storage conditions in the original packing, the kit is stable for one year from the date of shipment. Repeated thawing and freezing should be avoided. Non-hazardous. No MSDS required.

4. PRECAUTIONS FOR USE

- Please read the instruction carefully before use.
- The kit is intended for research use only, not for diagnostics purpose.
- Experiments should be performed under proper sterile condition with aseptic techniques.
- All reagents should be thawed thoroughly, mix the components by inverting and centrifuge briefly before use.
- Medaysis Ultra-Sensitive IDH1 mutation detection kit is a PCR-based test to be used by trained laboratory technicians with the appropriate laboratory facilities and equipment.
- Avoid inhalation and ingestion.
- Positive and negative controls should be run simultaneously with all specimens.

5. ADDITIONAL REAGENTS AND INSTRUMENTS REQUIRED

5.1 Reagents

- DNA extraction
- 6 x sample loading buffer

- Agarose
- 1 x TAE buffer
- Novel juice or ethidium bromide
- 100bp DNA ladder standard (Range: 100 – 1000 bp)
- Positive controls: IDH1 Exon 4 mutation control

5.2 Materials

- Sterile, nuclease-free PCR tubes for preparing master mixes
- Adjustable Pipettes for samples preparation
- Disposable sterile pipette tips with filter
- Disposable gloves

5.3 Instruments

- Electrophoresis equipment and power supply
- Sanger Sequencer (*our kit is compatible with DNA analyzer ABI3730 and ABI3130)
- The kit has currently been optimized by using ABI Veriti Thermo Cycler. Table 2. List of compatible PCR instruments which has been tested:
- Optimization might be necessary for other instruments. For more information of instrument compatibility, please contact the technical service at Medaysis.

Table 2. PCR instruments

Company	Model
Applied Biosystems	Veriti
Bio-Rad	T100
Biometra	T-3000

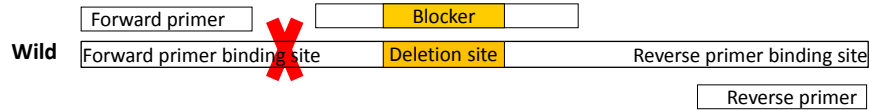
6. PRODUCT DESCRIPTION AND PRICINPLE

Ultra-Sensitive IDH1 Mutation Detection Kit is a CloDiA™ PCR method using novel and proprietary mutation enrichment technology. CloDiA™ PCR has two types of technique involved - Unindel™ PCR and Stuntmer™ PCR. Unindel™ PCR is designed to detect a broad range of insertions/deletions (universal insertions/deletions) in the target region. The three-primer set consists of forward primer, reverse primer and blocker which inhibits amplification of wild type gene but enables amplification of exonic insertions/ deletions. Stuntmer™ PCR is designed to detect a broad range of point mutations in the target region. The structure of both the forwarder and reverse primer has three ports including R Port, E Port, and L Port to suppress amplification of wild type gene but maximize amplification of mutation type. Stuntmer™ PCR detects a broad range of point mutations in exon 4 of human IDH1 gene. Sanger sequencing can be used to analyze the sequence.

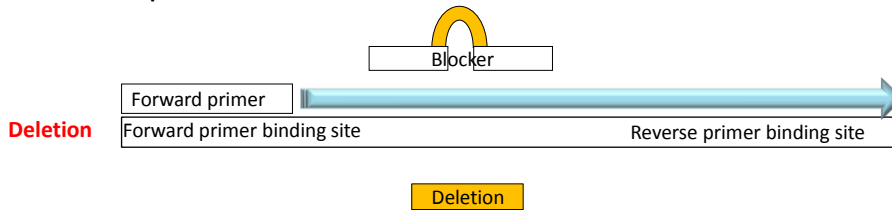
Figure 1. Principle of the Technology.

Unindel PCR: Detects a Broad Range of Insertions/Deletions

Blocker binds to deletion site and inhibits amplification

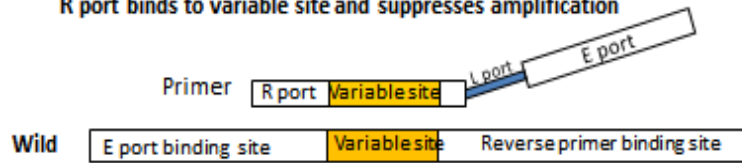


Blocker unbinds from the site and Forward primer binds to the site to enable amplification

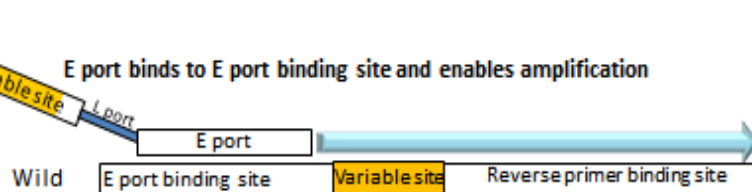


Stuntmer PCR: Detects a Broad Range of Point Mutations

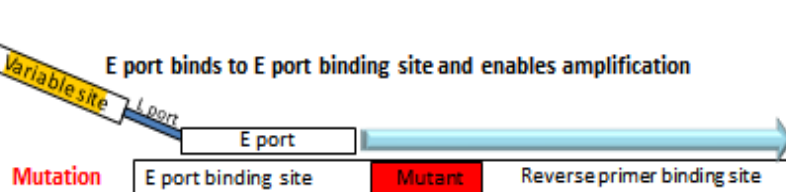
R port binds to variable site and suppresses amplification



E port binds to E port binding site and enables amplification



E port binds to E port binding site and enables amplification



7. PROTOCOL

To minimize the risk of contamination with foreign DNA, it is recommended that the kits should be conducted in a PCR workstation.

7.1 DNA preparation

Human genomic DNA must be extracted from formalin-fixed paraffin-embedded FFPE tissue, fine needle biopsy or pleural effusion specimens. For FFPE tissue, Medaysis recommends use of Qiagen DNA extraction kit (QIAamp DNA FFPE Tissue Kit, Cat. No. 56404) for genomic DNA extractions. For instructions, refer to the manufacturer's manuals. The kit can be used with DNA extracted with the most common manual and automated extraction methods. The OD value of genomic DNA extractions should be measured using the spectrophotometer or similar approach. Make sure that OD₂₆₀/OD₂₈₀ value of sample is between 1.8 and 2.0. Extracted genomic DNA specimens may be stored at -

20°C for long-term storage or refer to the manufacturer's manuals.

For further information regarding the compatibility of the device with different extraction methods please contact the technical support at Medaysis.

7.2 DNA quality control preparation

Numerous molecular detection tests rely on the quality of the genomic DNA specimens. DNA quality control (DNA QC) primer mix is provided to ensure consistent DNA quality.

1. Thaw and centrifuge DNA QC Primer Mix, 2x PCR Master Mix and Nuclease-Free Water at 4°C before use.
2. Prepare one PCR tube and label it as DNA QC.
3. Prepare the PCR Reaction Mixture in the DNA QC tube by adding 10 µl 2x PCR Master Mix, 4 µl DNA QC Primer Mix and 5 µl Nuclease-Free Water with a total of 19 µl mixture per reaction.
4. Add 1 µl (20~100 ng) DNA specimen into the DNA QC tube.
5. Pipette the mixture gently and centrifuge briefly.

Note: If more than one DNA specimens need to be tested, we suggest preparing a reaction mixture containing proportional amount of 2x PCR Master Mix, DNA QC Primer Mix and Nuclease-Free Water. Then aliquot 19 ul mixture per reaction to each DNA QC tube and add 1 ul DNA specimen into each tube.

7.3 PCR reaction preparation

1. Thaw and centrifuge all tubes (IDH1 Exon 4 Primer mix, 2x PCR Master Mix and Nuclease-Free Water) at 4°C before use.
2. Prepare PCR tube and label it as S1.
3. Prepare the PCR Reaction Mixture in the S1 tube by adding 10µl 2x PCR Master Mix, 4 µl IDH1 Exon 4 Primer Mix and 5 µl Nuclease-Free Water with a total of 19µl mixture per reaction.
4. Add 1 µl (20~100 ng/µl) DNA specimen into the S1 tube.
5. Pipette the mixture gently and centrifuge briefly.

Note: If more than one DNA specimens need to be tested, take the same procedure as the DNA QC preparation. See Table 3 & 4.

Table 3. PCR tube preparation per one reaction:

S1	DNA QC	PC	NC
Exon 4 mixture	DNA Quality Control	Positive control	Negative control

Table 4. Prepare the reaction mixture per one reaction according to the table below:

No.	Component	Volume (µl)
1	DNA specimen (20~100 ng/µl) or positive or negative control	1
2	Primer Mix	4
3	2x PCR Master Mix	10
4	Nuclease-Free Water	5
	Final Volume	20

7.4 PCR thermal cycling condition

Table 5. Follow the PCR protocol exactly when operate PCR instrument

	Temperature (°C)	Time (min)	Cycle(s)
Stage 1			
Pre-denaturation	95	5	1
Stage 2			

Denaturation	95	0.5	45
Primer Annealing	59	0.5	
Elongation	72	1	
Stage 3			
Extension	72	10	1
Preservation	10	∞	

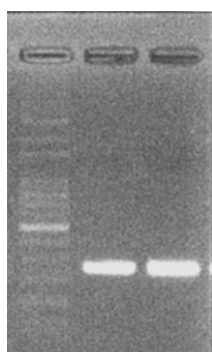
7.5 Run PCR gel electrophoresis (optional)

Before Sanger sequencing, the PCR products can be examined by the standard agarose gel electrophoresis (2% agarose in 100ml 1X TAE buffer). The DNA will be visualized by ethidium bromide or novel juice fluorescence.

1. Loading PCR products: mix 5 µl of PCR products with 1 µl of 6X novel juice loading dye and load in the 2% agarose gel.
2. Check the results of IDH1 amplicon (~230 bp)
3. Perform Sanger sequencing referring to the manufacturer’s manuals. Store the rest of PCR products at 4°C.

Note: For the instructions of DNA sequencer, refer to the manufacturer’s manuals.

Figure 2. The amplicons of each PCR product on gel electrophoresis



Lane 1 : 100 bp DNA Marker

Lane 2 : IDH1 Exon 4 PCR product (230 bp)

Lane 3 : DNA Quality Control PCR product (~220 bp)

1 2 3

Note: All results should be determined based on the sequencing data, not PCR gel electrophoresis.

7.6 Recommended Sanger sequencing protocol

Our kit is validated and compatible with DNA analyzer ABI3730. For the instructions of DNA sequencer, refer to the manufacturer’s manuals.

For more information of instrument compatibility, please contact the technical service at techsupport@medaysis.com.

Note: PCR products may need to be cleaned up before performing Sanger sequencing.

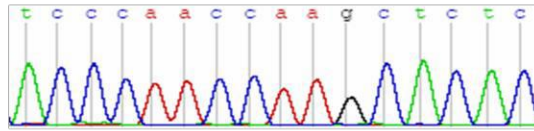
8. DATA ANALYSIS

PCR products must be sequenced for further analysis. For data analysis, please interpret results refer to the manufacturer’s manuals of the software.

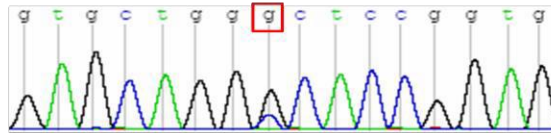
Note: To get reasonable interpretation of your results, it is recommended to eliminate baseline “noise” of data. For the common mutation information, please refer to the following data.

Figure 3. Example of sequence data

Wild type:



Point mutation:



Deletion / insertion:

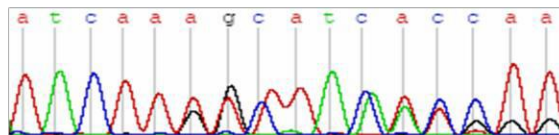


Figure 4. Example of sequence analysis

(A) Harbored a C-to-T transition; (B) Harbored a C-to-T transition and G-to-A transition; (C) Harbored a G-to-A transition.

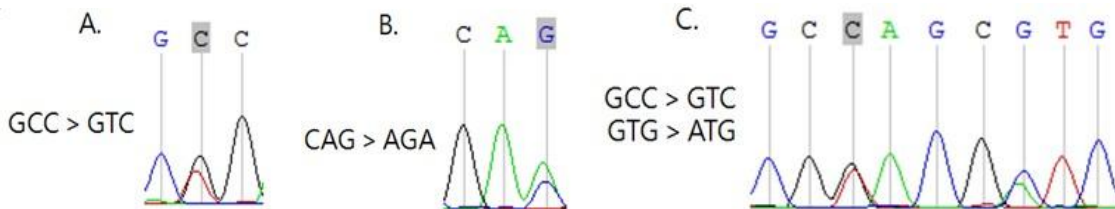
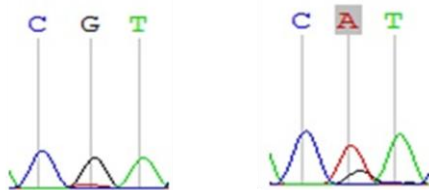


Figure 5. Example of sequence analysis of IDH1 mutation (A) IDH1 R132 wild type; (B) IDH1 R132H Harbored a G-to-A transition.

IDH1-Exon 4- R132- WT IDH1-Exon 4- R132- MT



9. TROUBLESHOOTING GUIDE

This troubleshooting guide may be helpful in solving similar problems that may arise. If there is any other question, please welcome to contact techsupport@medaysis.com.

Problems	Questions	Suggestions
No amplicon /no band	No PCR products observed on gel electrophoresis.	<ol style="list-style-type: none"> 1. Check the results of DNA Quality Control. If there is no amplicon shown at the size within DNA Quality Control, DNA may be fragmented during inadequate fixation steps. Please check your sample fixation process. 2. Remove presence of inhibitor in reaction in case it exists, and then repeat DNA Quality Control reaction. 3. Inspect temperature calibration on PCR instrument. 4. Check both the storage conditions and the expiration date on the label. Use a new kit if needed.
Non-specific amplification/ multiple products/ wrong size band amplified	How to eliminate the multiple or non-specific PCR products?	<ol style="list-style-type: none"> 1. Conduct kit in PCR workstation to minimize the risk of contamination with foreign DNA. 2. Inspect temperature calibration on PCR instrument. 3. Blocking primer annealing temperature is too low. Increase 2 to 3°C at annealing step to reduce non-specific binding and amplification.
Equipment variation	Have you checked the discrepancy among different PCR instruments?	Yes. We had done parallel tests on different instruments to make sure our kit compatible with different instrument models including ABI, Biometra, BioRad (Table 2).
Novel mutation	How to verify the novel mutation and confirm the accuracy of the results?	Please check any existed mutations on COSMIC website or do parallel tests with the proven data.

10. REFERENCE

1. Metabolic consequences of oncogenic IDH mutations. Parker, Seth J., and Christian M. Metallo. *Pharmacology & therapeutics* 152: 54-62, 2015.
2. Glioma groups based on 1p/19q, IDH, and TERT promoter mutations in tumors. Eckel-Passow, Jeanette E., et al. *New England Journal of Medicine* 372.26: 2499-2508, 2015.
3. The driver and passenger effects of isocitrate dehydrogenase 1 and 2 mutations in oncogenesis and survival prolongation. Molenaar, Remco J., et al. *Biochimica et Biophysica Acta (BBA)-Reviews on Cancer* 1846.2: 326-341, 2014.