

Mouse Anti-Synaptophysin [SYP/3551] (Neuroendocrine Marker): MC0508, MC0508RTU7

Intended Use: For Research Use Only

Description: Synaptophysin is a major integral transmembrane glycoprotein of synaptic vesicles with four transmembrane domains. This protein is present in almost all neurons and neuroendocrine cells throughout the body. An antibody to Synaptophysin is useful for the identification of tumors with neural and neuroendocrine differentiation.

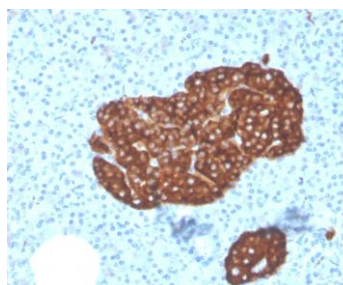
Specifications

Clone: SYP/3551
 Source: Mouse
 Isotype: IgG1k
 Reactivity: Human
 Localization: Cytoplasm
 Formulation: Antibody in PBS pH7.4, containing BSA and ≤ 0.09% sodium azide (NaN₃)
 Storage: Store at 2°- 8°C
 Applications: IHC
 Package:

Description	Catalog No.	Size
Synaptophysin [SYP/3551] (Neuroendocrine Marker) Concentrated	MC0508	1 ml
Synaptophysin [SYP/3551] (Neuroendocrine Marker) Prediluted	MC0508RTU7	7 ml

IHC Procedure

Positive Control Tissue: Pancreas, neuroendocrine tumor
 Concentrated Dilution: 50-200
 Pretreatment: Tris EDTA pH9.0, 15 minutes using Pressure Cooker, or 30-60 minutes using water bath at 95°-99°C
 Incubation Time and Temp: 30-60 minutes @ RT
 Detection: Refer to the detection system manual
 * Result should be confirmed by an established diagnostic procedure.



FFPE human pancreas stained with anti-Synaptophysin using DAB

References:

1. Deficiency of TYROBP, an adapter protein for TREM2 and CR3 receptors, is neuroprotective in a mouse model of early Alzheimer's pathology. Haure-Mirande JV, et al. Acta Neuropathol N/A:N/A, 2017.
2. Isolation of putative stem cells present in human adult olfactory mucosa. Tanos T, et al. PLoS One 12:e0181151, 2017.
3. Complement and microglia mediate early synapse loss in Alzheimer mouse models. Hong S, et al. Science 352:712-6, 2016. Initiation and characterization of small cell lung cancer patient-derived xenografts from ultrasound-guided transbronchial needle aspirates. Anderson WC, et al. PLoS One 10:e0125255, 2015.

Doc. 100-MC0508
Rev. A