

Rabbit Anti-Retinoblastoma [RB1/2313R]: RM0221, RM0221RTU7

Intended Use: For Research Use Only

Description: This protein belongs to the lipocalin family and is the specific carrier for retinol (vitamin A alcohol) in the blood. It delivers retinol from the liver stores to the peripheral tissues. In plasma, the RBP-retinol complex interacts with transthyretin which prevents its loss by filtration through the kidney glomeruli. A deficiency of vitamin A blocks secretion of the binding protein post translationally and results in defective delivery and supply to the epidermal cells.

Specifications

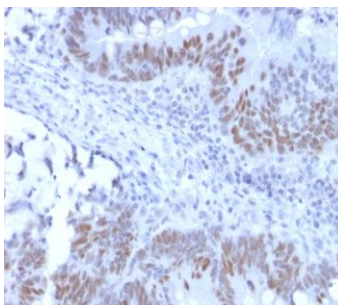
Clone: RB1/2313R
 Source: Rabbit
 Isotype: IgG
 Reactivity: Human, mouse
 Immunogen: Recombinant human full-length retinoblastoma protein
 Localization: Nucleus
 Formulation: Antibody in PBS pH7.4, containin BSA and ≤ 0.09% sodium azide (NaN3)
 Storage: Store at 2°- 8°C
 Applications: IHC
 Package:

Description	Catalog No.	Size
Retinoblastoma Concentrated	RM0221	1 ml
Retinoblastoma Prediluted	RM0221RTU7	7 ml

IHC Procedure*

Positive Control Tissue: Breast or colon carcinoma
 Concentrated Dilution: 50-200
 Pretreatment: Tris EDTA pH9.0, 15 minutes Pressure Cooker or 30-60 minutes water bath at 95°-99°C
 Incubation Time and Temp: 30-60 minutes @ RT
 Detection: Refer to the detection system manual

* Result should be confirmed by an established diagnostic procedure.



FFPE human colon carcinoma stained with anti-Retinoblastoma using DAB

References:

1. Retinoblastoma and retinocytoma (retinoma). Metz KA, et al. Pathologie. Nov;38(6):507-514, 2017.
2. Immunohistochemistry of apoptosis-related proteins in retinoblastoma. Natalino RJ, et al. Pathol Res Pract. Dec;212(12): 1144-1150, 2016.
3. Expression of SIRT2 and SIRT6 in retinoblastoma. Orellana ME, et al. Ophthalmic Res. 53(2):100-8, 2015.