

Rabbit Anti-PR [MD8R]: RM0264, RM0264RTU7

Intended Use: For Research Use Only

Description: The human progesterone receptor (PR), is a ligand-activated transcription factor and is a member of the steroid receptor family. PR exists in humans as two isoforms. PR is predominantly expressed in female sex steroid responsive tissues such as the mammary gland, uterus and ovary, but is also found in other tissues such as prostate stromal cells, anterior pituitary gland, and endocrine cells of the Langerhans' islets.

Specifications

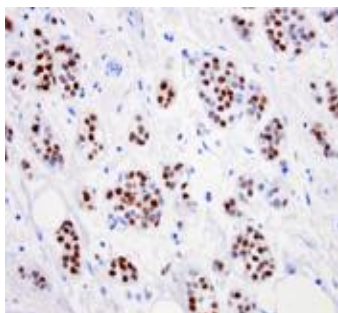
Clone: MD8R
Source: Rabbit
Isotype: IgG
Reactivity: Human
Localization: Nucleus
Formulation: Purified antibody in PBS pH7.4, containing BSA and $\leq 0.09\%$ sodium azide (NaN₃)
Storage: Store at 2°- 8°C
Applications: IHC
Package:

Description	Catalog No.	Size
PR Concentrated	RM0264	1 ml
PR Prediluted	RM0264RTU7	7 ml

IHC Procedure*

Positive Control Tissue: Breast cancer
Concentrated Dilution: 50-200
Pretreatment: Tris EDTA pH9.0, 15 minutes Pressure Cooker or 30-60 minutes water bath at 95°-99°C
Incubation Time and Temp: 30-60 minutes @ RT
Detection: Refer to the detection system manual

* Result should be confirmed by an established diagnostic procedure.



Human FFPE breast carcinoma stained with anti-PR using DAB

References:

1. Confirmation of the progesterone receptor as an efficient marker of treatment with 17 β -estradiol in veal calves. Pezzolato M, et al. Food Addit Contam Part A Chem Anal Control Expo Risk Assess. 33(1):60-5, 2016.
2. Expression of functional toll like receptor 4 in estrogen receptor/progesterone receptor-negative breast cancer.
3. Mehmeti M, et al. Breast Cancer Res. ep 22;17:130, 2015.
4. The relationship among HOXA10, estrogen receptor α , progesterone receptor, and progesterone receptor B proteins in rectosigmoid endometriosis: a tissue microarray study. Zanatta A, et al. Reprod Sci. Jan;22(1):31-7, 2015.