

Rabbit Anti-PAX8 [MD11R]: RM0261, RM0261RTU7

Intended Use: For Research Use Only

Description: PAX8 is expressed in the thyroid (and associated carcinomas), non-ciliated mucosal cells of the fallopian tubes and simple ovarian inclusion cysts, but not normal ovarian surface epithelial cells. PAX8 is expressed in a high percentage of ovarian serous, endometrioid, and clear cell carcinomas, but only rarely in primary ovarian mucinous adenocarcinomas. Studies have also found PAX8 expression in renal tubules as well as renal carcinoma, nephroblastoma and seminoma. Over 98% of clear cell RCCs, 90% of papillary RCCs, and 95% of oncocytomas were positive for PAX8, frequencies which are similar or better than for PAX2. Similarly, the absence of expression of PAX8 in breast and other non-GYN carcinomas other than those primary to the thyroid indicates that PAX8 is an important new marker of ovarian cancer and a useful marker for the differential diagnoses in lung and neck tumors, or tumors at distant sites where primary lung carcinoma or thyroid carcinoma are possibilities. PAX8, combined with organ system-specific markers such as uroplakin, mammaglobin, and TTF-1 can be a very useful panel to determine the primary site of invasive micropapillary carcinomas of ovary from bladder, lung, and breast. Unlike the polyclonal anti-PAX8 antibody, this rabbit monoclonal antibody does not react with pancreatic neuroendocrine tumors and thymic tumors.

Specifications:

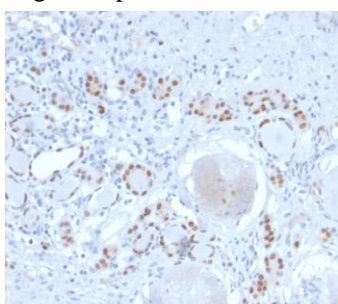
Clone: MD11R
 Source: Rabbit
 Isotype: IgG
 Reactivity: Human
 Immunogen: Recombinant fragment (around aa 60-261) of human PAX8 protein
 Localization: Nucleus
 Formulation: Antibody in PBS pH7.4, containing BSA and ≤ 0.09% sodium azide (NaN3)
 Storage: Store at 2°- 8°C
 Applications: IHC
 Package:

Description	Catalog No.	Size
PAX8 Concentrated	RM0261	1 ml
PAX8 Prediluted	RM0261RTU7	7 ml

IHC Procedure*:

Positive Control Tissue: Ovarian serous carcinoma
 Concentrated Dilution: 50-100
 Pretreatment: Tris EDTA pH9.0, 15 minutes Pressure Cooker or 30-60 minutes water bath at 95°-99°C
 Incubation Time and Temp: 30-60 minutes @ RT
 Detection: Refer to the detection system manual

* Result should be confirmed by an established diagnostic procedure.



FFPE human kidney stained with anti-PAX8 using DAB

References:

1. The value of PAX8 and WT1 molecules in ovarian cancer diagnosis. Liliac L, et al. Rom J Morphol Embryol. 54(1):17-27, 2013.
2. PAX8 is expressed in the majority of renal epithelial neoplasms: an immunohistochemical study of 223 cases using a mouse monoclonal antibody. Hu Y, et al. J Clin Pathol. Mar;65(3):254-6, 2012.

Doc. 100-RM0261
Rev. B