

Rabbit Anti-PAX5 [MD224R]: RM0269, RM0269RTU7

Intended Use: For Research Use Only

Description: PAX5 is a B-cell lineage specific activator protein (BSAP) that is essential for maintaining the identity and function of mature B cells during late B lymphopoiesis. It also plays a role in neural development and spermatogenesis. PAX5 is expressed in pro-, pre-, and mature B cells, and it is expressed in the vast majority of B-cell malignancies. Anti-PAX5 is a specific marker for the B cell lineage. PAX5 is thus useful for a panel of antibodies for the identification of cellular origin of undifferentiated tumors. The expression of PAX5 in endocrine tumors has been shown to be high in Merkel cell carcinoma and small cell carcinoma, but not carcinoid tumor. PAX5 is also a marker for neuronendocrine carcinomas.

Specifications

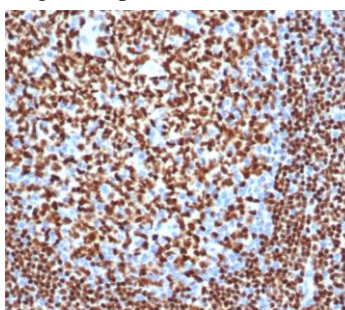
Clone: MD224R
 Source: Rabbit
 Isotype: IgG
 Reactivity: Human, dog
 Immunogen: Recombinant fragment aa 235-382 of human PAX5 protein
 Localization: Nucleus
 Formulation: Purified antibody in PBS pH7.4, containing BSA and ≤ 0.09% sodium azide (NaN3)
 Storage: Store at 2°- 8°C
 Applications: IHC
 Package:

Description	Catalog No.	Size
PAX5 Concentrated	RM0269	1 ml
PAX5 Prediluted	RM0269RTU7	7 ml

IHC Procedure*

Positive Control Tissue: Tonsil
 Concentrated Dilution: 50-200
 Pretreatment: Tris EDTA pH9.0, 15 minutes Pressure Cooker or 30-60 minutes water bath at 95°-99°C
 Incubation Time and Temp: 30-60 minutes @ RT
 Detection: Refer to the detection system manual

* Result should be confirmed by an established diagnostic procedure.



FFPE human tonsil stained with anti-PAX5 using DAB

References:

1. Diagnostic utility of PAX2 and PAX5 in distinguishing non-small cell lung cancer from small cell lung cancer. Ren Y, et al. Int J Clin Exp Pathol 8:14709-16, 2015.
2. Protein Expression for Novel Prognostic Markers (Cyclins D1, D2, D3, B1, B2, ITGβ7, FGFR3, PAX5) Correlate With Previously Reported Gene Expression Profile Patterns in Plasma Cell Myeloma. Mansoor A, et al. Appl Immunohistochem Mol Morphol. May-Jun;23(5):327-33, 2015.
3. A recurrent germline PAX5 mutation confers susceptibility to pre-B cell acute lymphoblastic leukemia. Shah S, et al. Nat Genet 45:1226-31, 2013.