

Rabbit Anti-LIF (Leukemia Inhibitory Factor) Polyclonal: RC0019

Intended Use: For Research Use Only

Description: Leukemia Inhibitory Factor (LIF) is a pleiotropic cytokine produced at the maternal-fetal interface which has been shown to play essential roles in several different systems. Its activities include the induction of hematopoietic differentiation in normal and myeloid leukemia cells, the induction of neuronal cell differentiation, and the stimulation of acute-phase protein synthesis in hepatocytes. LIF is commonly over-expressed in many solid cancers and recent studies have implicated LIF may be an useful new biomarker for early diagnosis of pancreatic cancer. Furthermore, LIF and its cognate receptor LIFR signaling plays a key role in tumor growth, progression, metastasis, stemness and therapy resistance. LIF/LIFR axis is implicated as a promising clinical target for cancer therapy.

Specifications:

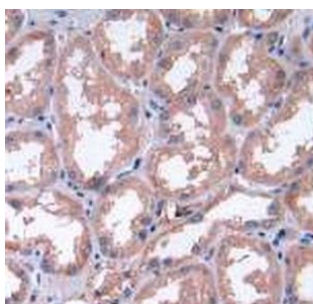
Clone: Polyclonal
Source: Rabbit
Isotype: IgG
Reactivity: Human
Immunogen: Recombinant LIF (Lys2~Ala201) expressed in E Coli.
Localization: Secreted
Formulation: Affinity purified antibody in PBS buffer pH7.4, containing BSA and $\leq 0.09\%$ sodium azide (NaN₃)
Storage: Store at 2°- 8°C
Applications: IHC, WB
Package:

Description	Catalog No.	Size
LIF (Leukemia Inhibitory Factor) Concentrated	RC0019	1 ml

IHC Procedure*:

Positive Control Tissue: Placenta
Concentrated Dilution: 25-100
Pretreatment: Tris EDTA pH9.0, 15 minutes Pressure Cooker or 30-60 minutes water bath at 95°-99°C
Incubation Time and Temp: 30-60 minutes @ RT
Detection: Refer to the detection system manual

* Result should be confirmed by an established diagnostic procedure.



FFPE human kidney stained with anti-LIF using DAB

References:

1. Targeting LIF/LIFR signaling in cancer. Suryavathi Viswanadhapalli, et al. Genes Dis. 2022 Jul; 9(4): 973–980.
2. Published online 2021 Apr 29. doi: 10.1016/j.gendis.2021.04.003.
3. Pinopodes, leukemia inhibitory factor, integrin- β 3, and mucin-1 expression in the peri-implantation endometrium of women with unexplained recurrent pregnancy loss. Xu B, et al. Fertil Steril. Aug;98(2):389-95, 2012.
4. Effects Of Acupuncture On Lif And Il-12 In Rats Of Implantation Failure. Gui J, et al. Am J Reprod Immunol. May;67(5):383-90, 2012.
5. The effects of mifepristone on the expressions of osteopontin, interleukin-6 and leukemia inhibitory factor in the villi of early pregnant women. Pei K, et al. Contraception. Oct;82(4):379-84, 2010.