

Mouse Anti-HLA-Aw32 & HLA-A25 (MHC I) [CATA-1]: MC0053

Intended Use: For Research Use Only

Description: This antibody reacts with cells bearing HLA-A25 or HLA-Aw32 antigens. In addition, a reaction was observed with a cell of phenotype A2, Aw31; B17, Bw49. HLA-A, with HLA-B and HLA-C, belongs to major histocompatibility complex (MHC) class I antigens and expresses constitutively on all nucleated cells. HLA system comprises closely linked genes controlling highly polymorphic proteins involved in the presentation of peptides to the T-cell receptor, inhibition of NK cell cytotoxicity, and rejection of tissue allotransplantation. Specific alleles at HLA loci are associated with diseases. This MAb is specifically applicable for typing peripheral T cells for the antigens HLA-A25 and HLA-Aw32.

Specifications

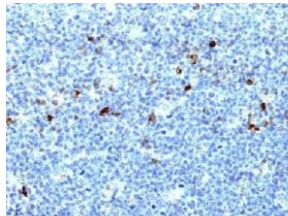
Clone: CATA-1
Source: Mouse
Isotype: IgG2a/k
Reactivity: Human
Localization: Membrane
Formulation: Protein A/G purified antibody from bioreactor concentrate. Prepared in 10mM PBS with 0.2% BSA and < 0.09% sodium azide (NaN₃)
Storage: Store at 2°- 8°C. For longer periods of storage, store at -20°C. Avoid repeat freeze-thaw cycles
Applications: IHC, Flow Cyt., ICC/IF
Package:

Description	Catalog No.	Size
HLA-Aw32 & HLA-A25 (MHC I) Concentrated	MC0053	1 ml

IHC Procedure*

Positive Control Tissue: THP-1 and Jurkat cells. Tonsil, lymph node
Concentrated Dilution: 50-200
Pretreatment: Citrate pH6.0, 15 minutes using Pressure Cooker, or 30-60 minutes using water bath at 95°-99°C
Incubation Time and Temp: 30-60 minutes @ RT
Detection: Refer to the detection system manual

* Result should be confirmed by an established diagnostic procedure.



FFPE human tonsil stained with anti-HLA-Aw32&A25 using DAB

References

1. GANP regulates recruitment of AID to immunoglobulin variable regions by modulating transcription and nucleosome occupancy. Singh SK, et al. Nat Commun 4:1830, 2013.
2. PI3KC2a, a class II PI3K, is required for dynamin-independent internalization pathways. Krag C et al. J Cell Sci 123:4240-50, 2010.
3. The A subunit of type IIb enterotoxin (LT-IIb) suppresses the proinflammatory potential of the B subunit and its ability to recruit and interact with TLR2. Liang S et al. J Immunol 178:4811-9, 2007.
4. Monoclonal antibody against HLA-Aw32 + A25. Is HLA-Aw32 an allele with no unique antigenic determinant? Vilella R et al. Hum Immunol. 6(1):53-62, 1983.