

Rabbit Anti-Filaggrin [MD156R]: RM0056, RM0056RTU7

Intended Use: For Research Use Only

Description: Filaggrin is an intermediate filament-associated protein that aggregates keratin intermediate filaments in mammalian epidermis. It is initially synthesized as a polyprotein precursor, profilaggrin (consisting of multiple filaggrin units of 324 aa each), which is localized in keratohyalin granules, and is subsequently proteolytically processed into individual functional filaggrin molecules. Active filaggrin is present at a level of the epidermis where keratinocytes are in transition between the live nucleated granular layer and the anucleate cornified layer, suggesting that filaggrin aids in the terminal differentiation process by facilitating apoptotic machinery.

Specifications

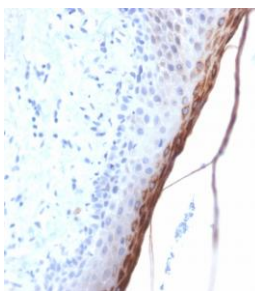
Clone: MD156R
Source: Rabbit
Isotype: IgG
Reactivity: Human
Immunogen: Recombinant human Filaggrin protein fragment aa 198-288
Localization: Mitochondrion, nucleus membrane
Formulation: Antibody in PBS pH7.4, containing BSA and $\leq 0.09\%$ sodium azide (NaN₃)
Storage: Store at 2°- 8°C
Applications: IHC
Package:

Description	Catalog No.	Size
Filaggrin Concentrated	RM0056	1 ml
Filaggrin Prediluted	RM0056RTU7	7 ml

IHC Procedure*

Positive Control Tissue: Skin
Concentrated Dilution: 50-200
Pretreatment: Tris EDTA pH9.0, 15 minutes using Pressure Cooker, or 30-60 minutes using water bath at 95°-99°C
Incubation Time and Temp: Overnight @ 4°C
Detection: Refer to the detection system manual

* Result should be confirmed by an established diagnostic procedure.



FFPE human skin stained with anti-Filaggrin using DAB

References:

1. Filaggrin expression via immunohistochemistry in basal cell carcinoma and squamous cell carcinoma. Kaitlin Vanderbeck, et al., J Cutan Pathol. Feb 4, 2021.
2. Immunohistochemical evaluation of filaggrin polyclonal antibody in atopic and normal beagles. Rosanna Marsella, et al., Vet Dermatol. Oct;20(5-6):547-54, 2009.