

Mouse Anti-Epithelial Antigen (Ep-Cam) [MOC-31]: MC0232, MC0232RTU7

Intended Use: For Research Use Only

Description: Ep-CAM is a highly conserved type I transmembrane glycoprotein and is expressed on most normal and malignant epithelial cells. Ep-CAM is also known as epithelial cell adhesion molecule or MOC31, Ber-EP4. It is detected at the membrane/cytoplasm of the majority of epithelial tissues (all simple, pseudo-stratified and transitional epithelial), with the exception of the adult squamous epithelium and some epithelium-derived cells, such as hepatocytes, epidermal keratinocytes, gastric parietal cells, myoepithelial cells, and thymic cortical epithelium. In tumors, Ep-CAM is over expressed by the majority of human epithelial carcinomas, except hepatocellular carcinomas (HCC).

Specifications

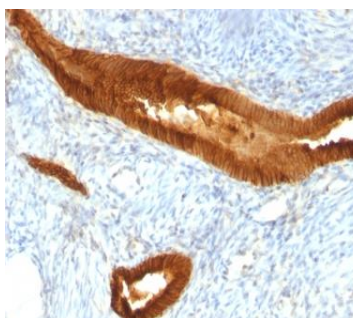
Clone:	MOC-31
Source:	Mouse
Isotype:	IgG1k
Reactivity:	Human
Immunogen:	Neuraminidase treated GLS-1 human small cell lung carcinoma cells
Localization:	Membrane
Formulation:	Antibody in PBS pH 7.4, containing BSA and $\leq 0.09\%$ sodium azide (NaN ₃)
Storage:	Store at 2°- 8°C
Applications:	IHC
Package:	

Description	Catalog No.	Size
Ep-CAM Concentrated	MC0232	1 ml
Ep-CAM Prediluted	MC0232RTU7	7 ml

IHC Procedure*

Positive Control Tissue:	Colon, thyroid
Concentrated Dilution:	50-200
Pretreatment:	Citrate pH6.0 or EDTA pH8.0, 15 min Pressure Cooker or 30-60 min water bath at 95°-99°C
Incubation Time and Temp:	30-60 minutes @ RT
Detection:	Refer to the detection system manual

* Result should be confirmed by an established diagnostic procedure.



FFPE human endometrial carcinoma stained with anti-Ep-CAM using DAB

References:

1. Multiplex flow cytometry barcoding and antibody arrays identify surface antigen profiles of primary and metastatic colon cancer cell lines. Sukhdeo K et al. PLoS One 8:e53015 2013.
2. EpCAM is a putative stem marker in retinoblastoma and an effective target for T-cell-mediated immunotherapy. Mitra M et al. Mol Vis 18:290-308 (2012).
3. Epstein-barr virus latent membrane protein 1 induces cancer stem/progenitor-like cells in nasopharyngeal epithelial cell lines. Kondo S et al. J Virol 85:11255-64 2011.
4. Expression of the GA733 gene family and its relationship to prognosis in pulmonary denocarcinoma. Kobayashi H et al. Virchows Arch 457:69-76 2010.