

**Mouse Anti-Ep-CAM [Ber-EP4]: MC0334, MC0334RTU7**

**Intended Use:** For Research Use Only

**Description:** Ep-CAM is a highly conserved type I transmembrane glycoprotein and is expressed on most normal and malignant epithelial cells. Ep-CAM is also known as epithelial cell adhesion molecule or MOC31, Ber-EP4. It is detected at the membrane/cytoplasm of the majority of epithelial tissues (all simple, pseudo-stratified and transitional epithelial), with the exception of the adult squamous epithelium and some epithelium-derived cells, such as hepatocytes, epidermal keratinocytes, gastric parietal cells, myoepithelial cells, and thymic cortical epithelium. In tumors, Ep-CAM is over expressed by the majority of human epithelial carcinomas, except hepatocellular carcinomas (HCC).

**Specifications**

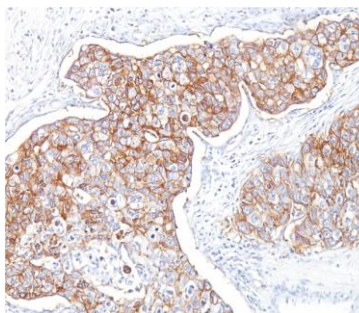
Clone:	Ber-EP4
Source:	Mouse
Isotype:	IgG1k
Reactivity:	Human
Immunogen:	Human breast cancer MCF-7 cells
Localization:	Membrane
Formulation:	Antibody in PBS pH 7.4, containing BSA and $\leq 0.09\%$ sodium azide (NaN <sub>3</sub> )
Storage:	Store at 2°- 8°C
Applications:	IHC, ICC/IF
Package:	

Description	Catalog No.	Size
Ep-CAM Concentrated	MC0334	1 ml
Ep-CAM Prediluted	MC0334RTU7	7 ml

**IHC Procedure\***

Positive Control Tissue:	Adenocarcinoma, colon cancer, thyroid, MCF-7 or HT29 cells
Concentrated Dilution:	50-200
Pretreatment:	Pepsin enzyme at 37°C for 5-10 minutes or Tris EDTA pH9.0, 15 minutes Pressure Cooker or 30-60 minutes water bath at 95°-99°C
Incubation Time and Temp:	30-60 minutes @ RT
Detection:	Refer to the detection system manual

\* Result should be confirmed by an established diagnostic procedure.



FFPE human breast carcinoma stained with anti-Ep-CAM using DAB

**References:**

1. Multiplex flow cytometry barcoding and antibody arrays identify surface antigen profiles of primary and metastatic colon cancer cell lines. Sukhdeo K et al. PLoS One 8:e53015 2013.
2. EpCAM is a putative stem marker in retinoblastoma and an effective target for T-cell-mediated immunotherapy. Mitra M et al. Mol Vis 18:290-308 (2012).
3. Epstein-barr virus latent membrane protein 1 induces cancer stem/progenitor-like cells in nasopharyngeal epithelial cell lines. Kondo S et al. J Virol 85:11255-64 2011.
4. Expression of the GA733 gene family and its relationship to prognosis in pulmonary adenocarcinoma. Kobayashi H et al. Virchows Arch 457:69-76 2010.