

Mouse Anti-Calcitonin [MD201]: MC0444, MC0444RTU7

Intended Use: For Research Use Only

Description: Calcitonin is a 32-amino acid polypeptide hormone that is commonly expressed in the parafollicular C cells in the thyroid gland. Calcitonin is a potent plasma calcium-lowering peptide; it decreases the level of calcium and phosphate in blood by promoting the incorporation of these ions in bones. Calcitonin antibody is useful for the identification of C cell hyperplasia and medullary thyroid carcinomas.

Specifications

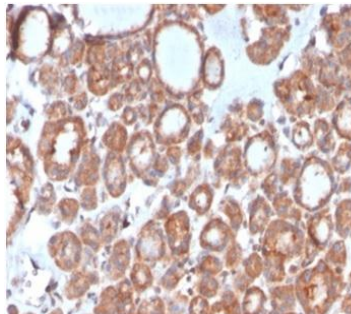
Clone:	MD201
Source:	Mouse
Isotype :	IgG2b/k
Reactivity:	Human
Immunogen:	Recombinant fragment of human calcitonin protein aa 3-116
Localization:	Cytoplasm
Formulation:	Purified antibody in PBS pH7.4, containing BSA and $\leq 0.09\%$ sodium azide (NaN ₃)
Storage:	Store at 2°- 8°C
Applications:	IHC
Package:	

Description	Catalog No.	Size
Calcitonin Concentrated	MC0444	1 ml
Calcitonin Prediluted	MC0444RTU7	7 ml

IHC Procedure*

Positive Control Tissue:	Thyroid, medullary carcinoma of thyroid
Concentrated Dilution:	50-200
Pretreatment:	Tris EDTA pH9.0, 15 minutes Pressure Cooker or 30-60 minutes water bath at 95°-99°C
Incubation Time and Temp:	30-60 minutes @ RT
Detection:	Refer to the detection system manual

* Result should be confirmed by an established diagnostic procedure.



FFPE human thyroid stained with anti-Calcitonin using DAB

References:

1. Profiling of the calcitonin-calcitonin receptor axis in primary prostate cancer: clinical implications and molecular correlates. Thakkar A, et al. *Oncol Rep.* Sep;30(3):1265-74, 2013.
2. Calcitonin gene-related peptide is a promising marker in ulcerative colitis. Li FJ, et al. *Dig Dis Sci.* Mar;58(3):686-93, 2013.
3. Somatostatin, substance P and calcitonin gene-related peptide-positive intramural nerve structures of the human large intestine affected by carcinoma. Godlewski J, et al. *Folia Histochem Cytobiol.* Sep 30;48(3):475-83, 2010.