

Mouse Anti-CTXI (Cross Linked C-Telopeptide of Type I Collagen) [C2]: MC0019

Intended Use: For Research Use Only

Description: Cross-Linked Telopeptides C-telopeptides (CTX), is the C-terminal telopeptide of fibrillar collagens such as collagen type I (CTXI) and type II (CTXII). It is used as a biomarker in the serum to measure the rate of bone turnover. The CTXI is a sensitive but also rather variable marker of bone resorption. It can be useful in assisting to determine a patient's nonsurgical treatment response as well as evaluate a patient's risk of developing complications during healing following surgical intervention. Two biochemical markers reflecting degradation of CTX, which is released by cathepsin K cleavage of intact bone collagen.

Specifications

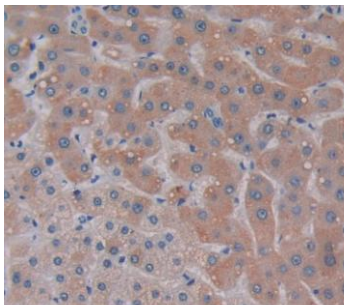
Clone: C2
 Source: Mouse
 Isotype: IgG2b/k
 Reactivity: Human
 Immunogen: Synthetic Peptide of CTXI conjugated to KLH
 Localization: Cytoplasm
 Formulation: Antibody in PBS pH7.4, containing BSA and $\leq 0.09\%$ sodium azide (NaN₃)
 Storage: Store at 2°- 8°C
 Applications: IHC, ICC/IF, WB
 Package:

Description	Catalog No.	Size
CTXI (Cross Linked C-Telopeptide of Type I Collagen) Concentrated	MC0019	1 ml

IHC Procedure*

Positive Control Tissue: Liver, kidney, liver or lung cancer
 Concentrated Dilution: 10-50
 Pretreatment: Tris EDTA pH9.0, 15 minutes Pressure Cooker or 30-60 minutes water bath at 95°-99°C
 Incubation Time and Temp: Overnight @ 4°C
 Detection: Refer to the detection system manual

* Result should be confirmed by an established diagnostic procedure.



FFPE human liver stained with anti-CTXI using DAB

References:

1. The presence of FCGR2B promoter or transmembrane region variant alleles leads to reduced serum IL-6 levels in rheumatoid arthritis. Stefanie Meister, et al., Rheumatol Int. Aug;35(8):1311-8, 2015.
2. Borage and fish oils lifelong supplementation decreases inflammation and improves bone health in a murine model of senile osteoporosis. Fabien Wauquier, et al. Bone. Feb;50(2):553-61, 2012.
3. Measurement of C-terminal telopeptide of type I collagen (CTX) in serum. S A Paul Chubb, et al., Clin Biochem. Aug;45(12):928-35, 2012.