

Rabbit Anti-Cytokeratin 14 [MD187R]: RM0075, RM0075RTU7

Intended Use: For Research Use Only

Description: Cytokeratin 14 (CK14) is a 50-kDa keratin expressed in abundance in stratified epithelial cells, epidermal cells, basal cells, mesothelial cells, and myoepithelial cells in various tissues including breast and prostate. CK14 is helpful in the identification of breast cancer with basal phenotype. It has been reported that cytokeratin 5/14-positive breast cancers are true basal phenotype confined to BRCA1 tumors. Along with p63 and CK5, CK14 has been a useful marker for cells with basal, squamous and myoepithelial differentiation.

Specifications:

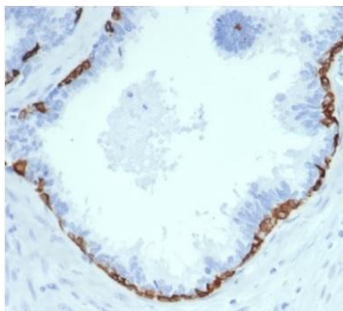
Clone: MD187R
Source: Rabbit
Isotype: IgG
Reactivity: Human
Immunogen: Recombinant human CK14 fragment aa350-472
Localization: Cytoplasm
Formulation: Purified antibody in PBS pH7.4, containing BSA and $\leq 0.09\%$ sodium azide (NaN₃)
Storage: Store at 2°- 8°C
Applications: IHC
Package:

Description	Catalog No.	Size
Cytokeratin 14 Concentrated	RM0075	1 ml
Cytokeratin 14 Prediluted	RM0075RTU7	7 ml

IHC Procedure*:

Positive Control Tissue: Skin, SqCC
Concentrated Dilution: 50-200
Pretreatment: Tris EDTA pH9.0, 15 minutes Pressure Cooker or 30-60 minutes water bath at 95°-99°C
Incubation Time and Temp: 30-60 minutes @ RT
Detection: Refer to the detection system manual

* Result should be confirmed by an established diagnostic procedure.



FFPE human prostate stained with anti-CK14 using DAB

References:

1. Development of a bacterial cellulose-based hydrogel cell carrier containing keratinocytes and fibroblasts for full-thickness wound healing. Loh EYX et al. Sci Rep 8:2875, 2018.
2. Characterization of Long-Term Cultured Murine Submandibular Gland Epithelial Cells. Ikeura K, et al. PLoS One 11:e0147407, 2016.
3. Isolation and characterization of hair follicle stem cells from Arbas Cashmere goat. He N, et al. Cytotechnology 68:2579-2588, 2016.