

**Rabbit Anti-CD44 (HCAM) [MD132R]: RM0044, RM0044RTU7**

**Intended Use:** For Research Use Only

**Description:** CD44 is a cell-surface glycoprotein postulated to play a role in a variety of biological processes, including cell-to-cell and cell-to-matrix adhesion, lymphocyte homing and tumor cell metastasis. Several isoforms of CD44 have been identified in human cells, and the genesis of some of these isoforms has been attributed to alternative splicing. Understanding of mechanisms regulating CD44 alternative splicing may provide insights into diverse processes, including tumor-cell metastasis and lymphocyte homing. CD44 is widely expressed on many types of cells with mesodermal and hematopoietic origin, epithelial cells and a variety of tumors derived from these cells. Loss of CD44 expression has been linked to tumor invasion, metastasis and progression in carcinomas of breast, prostate, lung, ovary and malignant melanoma.

**Specifications:**

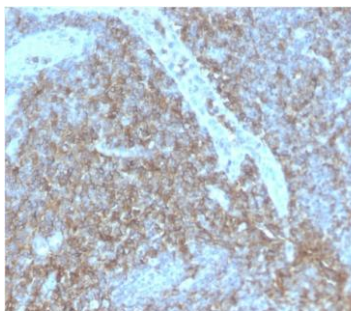
Clone: MD132R  
Source: Rabbit  
Isotype: IgG  
Reactivity: Human  
Immunogen: Stimulated human leukocytes  
Localization: Membrane  
Formulation: Purified Antibody in PBS pH7.4, containing BSA and  $\leq 0.09\%$  sodium azide (NaN3)  
Storage: Store at 2°- 8°C  
Applications: IHC, WB  
Package:

Description	Catalog No.	Size
CD44 (HCAM) Concentrated	RM0044	1 ml
CD44 (HCAM) Prediluted	RM0044RTU7	7 ml

**IHC Procedure\*:**

Positive Control Tissue: Tonsil, breast or colon cancer  
Concentrated Dilution: 50-200  
Pretreatment: Tris EDTA pH9.0, 15 minutes Pressure Cooker or 30-60 minutes water bath at 95°-99°C  
Incubation Time and Temp: 30-60 minutes @ RT  
Detection: Refer to the detection system manual

\* Result should be confirmed by an established diagnostic procedure.



FFPE human lymph node stained with anti-CD44 using DAB

**References:**

1. Role of astroglia in Down's syndrome revealed by patient-derived human-induced pluripotent stem cells. Chen C, et al. Nat Commun 5:4430, 2014.
2. Taxane-induced hedgehog signaling is linked to expansion of breast cancer stem-like populations after chemotherapy. Sims-Mourtada J, et al. Mol Carcinog N/A:N/A, 2014.
3. The CD44(+) ALDH(+) Population of Human Keratinocytes is Enriched for Epidermal Stem Cells with Long Term Repopulating Ability. Szabo AZ, et al. Stem Cells : 2013.