

Rabbit Anti-CD248/TEM1/endosialin [MD206R]: RM0172, RM0172RTU7

Intended Use: For Research Use Only

Description: CD248, also known as Tumor endothelial marker 1 (TEM1) or endosialin, consists of three EGF-like domains, a C-type lectin domain and a Sushi domain. It is a stromal cell marker highly expressed in lymphoid tissues during development, activated fibroblasts and in disease states where increased stromal cell proliferation and migration are evident, but not in most adult tissues. CD248 is highly upregulated in malignancies including breast cancer, brain tumors and sarcoma and is known to function in tumor growth and progression. CD248 gene is known to be upregulated in response to hypoxic conditions in the tumor environment through HIF2 activation. In liver fibrosis, CD248 marks the Hepatic Stellate Cells, the activated cells responsible for matrix production. In kidney fibrosis, CD248 marks the key effector cells within the fibrotic stroma including pericytes, myofibroblasts, and stromal fibroblasts, and in idiopathic pulmonary fibrosis, CD248 may be a marker for severity of disease and a major target in anti-angiogenic tumor therapy.

Specifications:

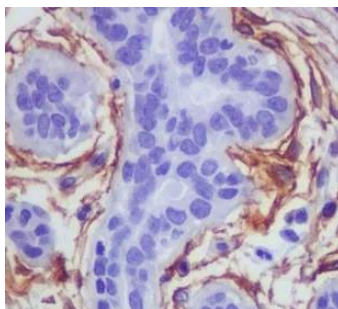
Clone: MD206R
 Source: Rabbit
 Isotype: IgG
 Reactivity: Human
 Immunogen: Recombinant fragment of human CD248
 Localization: Membrane
 Formulation: Purified antibody in PBS pH7.4, containing BSA and ≤ 0.09% sodium azide (NaN₃)
 Storage: Store at 2°- 8°C
 Applications: IHC
 Package:

Description	Catalog No.	Size
CD248/TEM1/endosialin Concentrated	RM0172	1 ml
CD248/TEM1/endosialin Prediluted	RM0172RTU7	7 ml

IHC Procedure*:

Positive Control Tissue: Breast, hemangiopericytoma, glioma
 Concentrated Dilution: 50-200
 Pretreatment: Tris EDTA pH9.0, 15 minutes Pressure Cooker or 30-60 minutes water bath at 95°-99°C
 Incubation Time and Temp: 30-60 minutes @ RT
 Detection: Refer to the detection system manual

* Result should be confirmed by an established diagnostic procedure.



FFPE human breast stained with anti-CD248 using DAB

References:

1. Fibroblasts direct differentiation of human breast epithelial progenitors. Morsing M, et al. Breast Cancer Res 22, 2020.
2. Persistent stromal fibroblast activation is present in chronic tendinopathy. Dakin SG, et al. Arthritis Res Ther 19:16, 2017.
3. Endosialin (CD248) is a marker of tumor-associated pericytes in high-grade glioma. Nicole Simonavicius, et al. Mod Pathol. Mar;21(3):308-15, 2008.

Doc. 100-RM0172
Rev. A