

Mouse Anti-CD205/LY75/gp200 [SPM487]: MC0310, MC0310RTU7

Intended Use: For Research Use Only

Description: CD205, also named DEC-205, belongs to the macrophage mannose receptor family of C-type lectin endocytic receptors. CD205 is predominantly expressed by the thymic cortical epithelium and by dendritic cells (DC), but can also be detected at low levels in T and B lymphocytes and several other epithelial cell types. CD205 is a novel thymic epithelial marker that is important for the positive selection process of thymocytes. It is a sensitive and specific marker for thymoma, while the sensitivity to thymic carcinoma is lower than CD5 and CD117.

Specifications

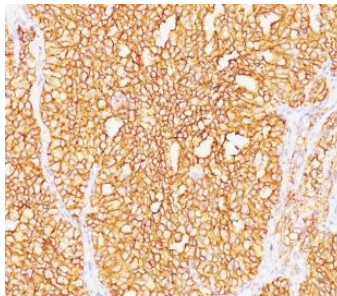
Clone:	SPM487
Source:	Mouse
Isotype:	IgG2b/k
Reactivity:	Human, horse
Immunogen:	Microsomal fraction of human renal cortical tissue homogenate
Localization:	Membrane, cytoplasm
Formulation:	Purified antibody in PBS pH7.4, containing BSA and ≤ 0.09% sodium azide (NaN ₃)
Storage:	Store at 2°- 8°C
Applications:	IHC, Flow Cyt., IF
Package:	

Description	Catalog No.	Size
CD205/LY75/gp200 Concentrated	MC0310	1 ml
CD205/LY75/gp200 Prediluted	MC0310RTU7	7 ml

IHC Procedure*

Positive Control Tissue:	Tonsil
Concentrated Dilution:	50-200
Pretreatment:	Tris EDTA pH9.0, 15 minutes Pressure Cooker or 30-60 minutes water bath at 95°-99°C
Incubation Time and Temp:	30-60 minutes @ RT
Detection:	Refer to the detection system manual

* Result should be confirmed by an established diagnostic procedure.



FFPE human RCC stained with anti-CD205 using DAB

References:

1. In vivo physiological and transcriptional profiling reveals host responses to Clostridium difficile toxin A and toxin B. D'Auria KM, et al. Infect Immun 81:3814-24, 2013.
2. Generation of anti-human DEC205/CD205 monoclonal antibodies that recognize epitopes conserved in different mammals. Park CG et al. J Immunol Methods. 2012.
3. Diagnostic utility of thymic epithelial markers CD205 (DEC205) and Foxn1 in thymic epithelial neoplasms. Nonaka D et al. Am J Surg Pathol. 2007.