

Mouse Anti-CD15/FUT4 [FUT4&815]: MC0646, MC0646RTU7

Intended Use: For Research Use Only

Description: CD15 is a complex cluster of cell surface glycoproteins and glycolipids with a common trisaccharide structure, 3-fucosyl-N-acetyllactosamine (3-FL), also referred to as Lewis X (LeX) antigen. This antigen is involved in neutrophil functions such as, cell-cell interactions, phagocytosis, stimulation of degranulation and respiratory burst. The CD15 is expressed in Reed-Sternberg cells, myeloid cells as well as epithelial cells. CD15 antibody has been used as an immunohistochemical marker to identify Reed-Sternberg cells (RSC) in Classical Hodgkin Lymphoma (CHL). CD15 is expressed on Reed-Sternberg cells of Hodgkin's disease and by various other cell types including myeloid cells and epithelial cells. Antibodies to CD15 recognize a pentasaccharide sequence occurring in lacto-N-fucopentaose III ceramide (also referred to as X hapten of Lex) found in higher glycolipids and glycoproteins. A review by Arber et al. has reported that antibodies to CD15 demonstrate positive staining in 87% of Hodgkin's disease including nodular sclerosing, mixed cellularity, and lymphocyte depletion, whereas the lymphocyte predominant variant exhibits a lower rate of positivity (37%). Among non-Hodgkin's lymphoma, 13% express CD15 including 4.1% B-cell, 21% T-cell, and 17% null-cell. CD15 expression has also been demonstrated in acute myeloid leukemia (65%) and chronic myelogenous leukemia (96% chronic phase and 54% blast phase). A relatively low level of CD15 expression has been reported in acute lymphoblastic leukemia (5.7% overall) with positivity observed in 7.7% common or precursor B-cell, 0% B-cell, 7.7% T-cell and 17.3% null-cell. Carcinomas derived from various organs have also been shown to be CD15 positive (56%) including adenocarcinomas, squamous cell carcinomas and undifferentiated large and small cell carcinomas.

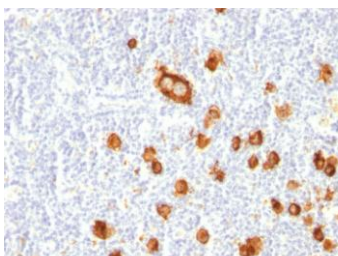
Specifications:

Clone: FUT4&815
 Source: Mouse
 Isotype: IgM
 Reactivity: Human
 Immunogen: Purified human neutrophils
 Localization: Cytoplasm, membrane
 Formulation: Antibody in PBS pH7.4, containing BSA and ≤ 0.09% sodium azide (NaN3)
 Storage: Store at 2°- 8°C
 Applications: IHC
 Package:

Description	Catalog No.	Size
CD15/FUT4 Concentrated	MC0646	1 ml
CD15/FUT4 Prediluted	MC0646RTU7	7 ml

IHC Procedure*:

Positive Control Tissue: Tonsil, Hodgkin's lymphoma
 Concentrated Dilution: 50-200
 Tris EDTA pH9.0, 15 minutes Pressure Cooker or 30-60 minutes water bath at 95°-99°C
 Incubation Time and Temp: 30-60 minutes @ RT
 Detection: Refer to the detection system manual
 * Result should be confirmed by an established diagnostic procedure.



FFPE human Hodgkin's lymphoma stained with anti-CD15 using DAB

References

1. Carb-3 is the superior anti-CD15 monoclonal antibody for immunohistochemistry. Røge R1, et al. Appl Immunohistochem Mol Morphol. Jul;22(6):449-58, 2014.