

**Rabbit Anti-CD138/Syndecan-1 [EPR6454]: RM0023, RM0023RTU7**

**Intended Use:** For Research Use Only

**Description:** CD138, also known as Syndecan-1, is a member of the transmembrane heparan sulfate proteoglycan family, acts as an extracellular matrix receptor and is involved in many cellular functions, including cell-cell adhesion and cell-matrix adhesion. CD138 expression is found in both hematopoietic and non-hematopoietic cells. In the hematopoietic system, CD138 labels plasma cells. It is an excellent marker for plasmacytic differentiation within the spectrum of hematologic malignancy. Among non-hematolymphoid cells, CD138 reactivity is observed in many types of epithelial cells and stoma cells in both normal and tumor tissues.

**Specifications:**

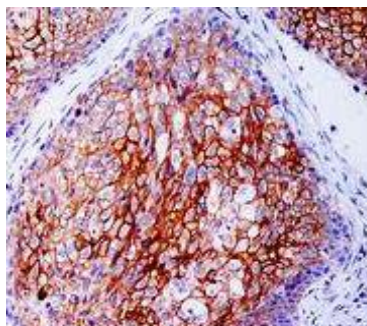
Clone: EPR6454  
 Source: Rabbit  
 Isotype: IgG  
 Reactivity: Human, mouse, rat  
 Localization: Membrane  
 Formulation: Antibody in PBS pH7.4, containing BSA and ≤ 0.09% sodium azide (NaN<sub>3</sub>)  
 Storage: Store at 2°- 8°C  
 Applications: IHC, Flow Cyt., ICC/IF, WB  
 Package:

Description	Catalog No.	Size
CD138/Syndecan-1 Concentrated	RM0023	1 ml
CD138/Syndecan-1 Prediluted	RM0023RTU7	7 ml

**IHC Procedure\*:**

Positive Control Tissue: Tonsil, cervical carcinoma, plasmacytoma  
 Concentrated Dilution: 50-200  
 Pretreatment: Tris EDTA pH9.0, 15 minutes Pressure Cooker or 30-60 minutes water bath at 95°-99°C  
 Incubation Time and Temp: 30-60 minutes @ RT  
 Detection: Refer to the detection system manual

\* Result should be confirmed by an established diagnostic procedure.



FFPE human cervical carcinoma stained with anti-CD138 using DAB

**References:**

1. Lack of R-Ras Leads to Increased Vascular Permeability in Ischemic Retinopathy. M, et al. Invest Ophthalmol Vis Sci 57:4898-4909, 2016.
2. Clinical implications in the shift of syndecan-1 expression from the cell membrane to the cytoplasm in bladder cancer. Miyake M, et al. BMC Cancer 14:86, 2014.
3. KSHV attachment and entry are dependent on αVβ3 integrin localized to specific cell surface microdomains and do not correlate with the presence of heparan sulfate. Garrigues HJ, et al. Virology 464-465C:118-133, 2014.
4. Heparan sulfate regulates hair follicle and sebaceous gland morphogenesis and homeostasis. Coulson-Thomas VJ, et al. J Biol Chem 289:25211-26, 2014.