

Mouse Anti-CD130/gp130/IL-6R β /IL-6ST [AN-H2]: MC0231, MC0231RTU7

Intended Use: For Research Use Only

Description: The activation of the IL-6 protein is dependent upon the binding of cytokines to their receptors. vIL6, a protein related to IL-6 and encoded by the Kaposi sarcoma-associated herpesvirus, can bypass the IL-6 receptor (IL-6R) and directly activate this protein. IL-6 first binds to IL-6R which subsequently associates with a gp130 dimer. The active signaling complex consists of at minimum IL-6, IL-6R and a dimer of two gp130 proteins that are linked by a disulfide bond. The second subunit of the IL-6 complex, gp130 (also known CD130, IL-6R β , IL-6ST), also functions as a component of several additional receptor complexes including leukemia inhibitory factor (LIF), oncostatin M (OSM), ciliary neurotrophic factor (CNTF) and IL-11. LIF binds to the LIF receptor with low affinity and to a complex of the LIF receptor and gp130 with high affinity while OSM appears to bind to gp130 with low affinity and to a complex of gp130 and the LIF receptor with high affinity. The protein encoded by this gene is a signal transducer shared by many cytokines, including IL-6, ciliary neurotrophic factor (CNTF), leukemia inhibitory factor (LIF), and oncostatin M (OSM). This protein functions as a part of the cytokine receptor complex.

Specifications:

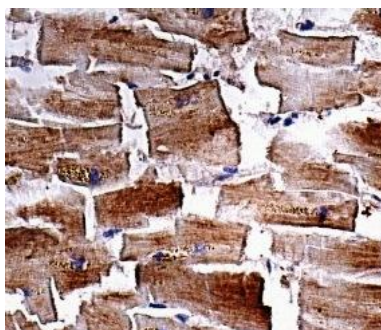
| | |
|---------------|---|
| Clone: | AH-H2 |
| Source: | Mouse |
| Isotype: | IgG1a/k |
| Reactivity: | Human |
| Immunogen: | IL-6 receptor beta transfected human Sf21 cells |
| Localization: | Cytoplasm, some membrane |
| Formulation: | Antibody in PBS pH7.4, containing BSA and \leq 0.09% sodium azide (NaN ₃) |
| Storage: | Store at 2°- 8°C |
| Applications: | IHC, ELISA, Flow Cyt., ICC/IF |
| Package: | |

| Description | Catalog No. | Size |
|--|-------------|------|
| CD130/gp130/IL-6R β /IL-6ST Concentrated | MC0231 | 1 ml |
| CD130/gp130/IL-6R β /IL-6ST Prediluted | MC0231RTU7 | 7 ml |

IHC Procedure*:

| | |
|---------------------------|--|
| Positive Control Tissue: | Colon carcinoma, Heart |
| Concentrated Dilution: | 50-200 |
| Pretreatment: | Citrate pH6.0 or EDTA pH8.0 15 min Pressure Cooker or 30-60 min water bath at 95°-99°C |
| Incubation Time and Temp: | 30-60 minutes @ RT |
| Detection: | Refer to the detection system manual |

* Result should be confirmed by an established diagnostic procedure.



FFPE human heart stained with anti-gp130 using DAB

References:

1. IL-6 trans-signaling system in intra-amniotic inflammation, preterm birth, and preterm premature rupture of the membranes. Lee, SY. et al. J. Immunol.. 186: 3226-3236, 2011.
2. A case of granulocyte-colony stimulating factor-producing hepatocellular carcinoma confirmed by immunohistochemistry. Joshita, S. et al. J. Korean Med. Sci.. 25: 476-480, 2010.

Doc. 100-MC0231
Rev. B