

Mouse Anti-BrdU [BRD3]: MC0625, MC0625RTU7

Intended Use: For Research Use Only

Description: 5'-Bromo-2'-deoxyuridine (BrdU) is a thymidine analog that, when added to replicating cells, is incorporated into newly synthesized DNA strands. Evaluating the uptake of BrdU by dividing cells can provide a reliable estimation of cellular proliferation rates. BrdU immunohistochemistry may prove useful in determining proliferative rates for the evaluation of tumors. This antibody is 100% cross-reactive with iododeoxyuridine (IdU).

Specifications:

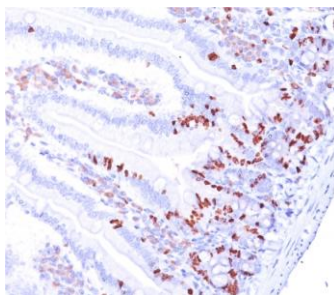
Clone: BRD3
Source: Mouse
Isotype: IgG1k
Reactivity: Species independent
Immunogen: Bromodeoxyuridine (BrdU) conjugated to BSA
Localization: Nucleus
Formulation: Antibody in PBS pH7.4, containing BSA and $\leq 0.09\%$ sodium azide (NaN₃)
Storage: Store at 2°- 8°C
Applications: IHC, Flow Cyt., IF
Package:

Description	Catalog No.	Size
BrdU Concentrated	MC0625	1 ml
BrdU Prediluted	MC0625RTU7	7 ml

IHC Procedure*:

Positive Control Tissue: BRDU labeled cells
Concentrated Dilution: 50-200
Pretreatment: 4N HCl for 30 minutes at room temperature followed by digestion with trypsin at 1mg/ml PBS, 10 min at 37°C
Incubation Time and Temp: 30-60 minutes @ RT
Detection: Refer to the detection system manual

* Result should be confirmed by an established diagnostic procedure.



FFPE mouse small intestine stained with anti-BrdU using DAB

References:

1. Yap/Taz are required for establishing the cerebellar radial glia scaffold and proper foliation. Hughes LJ, et al. Dev Biol 457:150-162 2020.
2. Hyaluronic acid promotes Lgr5+ stem cell proliferation and crypt fission through TLR4 and PGE2 transactivation of EGFR. Riehl TE, et al. Am J Physiol Gastrointest Liver Physiol 319:G63-G73, 2020.
3. Inducible SMARCAL1 knockdown in iPSC reveals a link between replication stress and altered expression of master differentiation genes. Pugliese GM, et al. Dis Model Mech 12:N/A, 2019.