

Mouse Anti-Blood Group Antigen B [HEP-20]: MC0006

Intended Use: For Research Use Only

Description: The antibody HEB-20 reacts with human blood group B. The specificity of HEB-20 was confirmed by comparison of specificity and reactivity to standard reagent using >5.000 samples of blood. This shows specific staining of erythrocytes and vascular epithelium of blood group B controls and no staining in group A controls. This antibody is applicable for tissue staining in tumor patients with blood groups B and AB. Blood group antigens are generally defined as molecules formed by sequential addition of saccharides to the carbohydrate side chains of lipids and proteins detected on erythrocytes and certain epithelial cells. The A, B and H antigens are reported to undergo modulation during malignant cellular transformation. Blood group related antigens represent a group of carbohydrate determinants carried on both glycolipids and glycoproteins. They are usually mucin type, and are detected on erythrocytes, certain epithelial cells, and in secretions of certain individuals. Sixteen genetically and biosynthetically distinct but inter related specificities belong to this group of antigens, including A, B, H, Lewis A, Lewis B, Lewis X, Lewis Y, and precursor type 1 chain antigens.

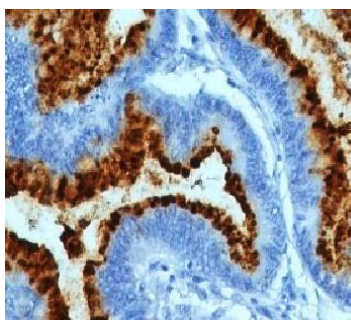
Specifications:

Clone: HEP-20
 Source: Mouse
 Isotype: IgG1k
 Reactivity: Human
 Immunogen: Mixture of erythrocytes of group B and glycoprotein fraction isolated from saliva of secretors with blood group B
 Localization: Membrane
 Formulation: Purified antibody in PBS pH7.4, containing BSA and ≤ 0.09% sodium azide (NaN₃)
 Storage: Store at 2°- 8°C
 Applications: IHC, ICC/IF
 Package:

Description	Catalog No.	Size
Blood Group Antigen B Concentrated	MC0006	1 ml

IHC Procedure*:

Positive Control Tissue: Colorectal carcinoma, KG1 cells
 Concentrated Dilution: 50-200
 Pretreatment: Tris EDTA pH9.0, 15 minutes Pressure Cooker or 30-60 minutes water bath at 95°-99°C
 Incubation Time and Temp: 30-60 minutes @ RT
 Detection: Refer to the detection system manual
 * Result should be confirmed by an established diagnostic procedure.



FFPE human colon carcinoma stained with anti-Blood Group Antigen B using DAB

References:

1. HLA and Histo-Blood Group Antigen Expression in Human Pluripotent Stem Cells and their Derivatives. Karin Säljö, et al. Scientific Reports. Oct. 2017. DOI:10.1038/s41598-017-12231-8.
2. Blood Group Antigen Expression in Isolated Human Liver Cells in Preparation for Implementing Clinical ABO-Incompatible Hepatocyte Transplantation. Kazuaki Tokodai, et al. J of Clinical and Experimental Hepatology. Vol. 10 | No. 2 | 106–113, 2020.

Doc. 100-MC0006
Rev. A