

Mouse Anti-BCA-225 [Cu-18]: MC0501, MC0501RTU7

Intended Use: For Research Use Only

Description: Anti-BCA-225 antibody recognizes a human breast carcinoma associated glycoprotein BCA-225 (220-225kD). This protein differs in size and distribution from other breast carcinoma antigens. Unlike other antibodies against breast carcinoma antigens, this antibody does not react with benign or malignant colonic, stomach, prostate, liver, pancreas, thyroid, or parotid tissues. Adenocarcinomas of the lung, ovary and endometrium also stain with this antibody.

Specifications:

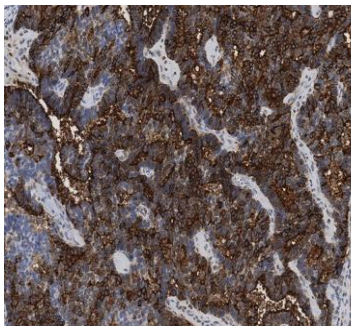
Clone: Cu-18
Source: Mouse
Isotype: IgG1k
Reactivity: Human
Immunogen: Human breast carcinoma BCA-225 protein secreted by the T47D [11] cell line
Localization: Cytoplasm
Formulation: Antibody in PBS pH7.4, containing BSA and $\leq 0.09\%$ sodium azide (NaN₃).
Storage: Store at 2°- 8°C
Applications: IHC
Package:

Description	Catalog No.	Size
BCA-225 Concentrated	MC0501	1 ml
BCA-225 Prediluted	MC0501RTU7	7 ml

IHC Procedure*:

Positive Control Tissue: Breast carcinoma, fallopian tube, skin
Concentrated Dilution: 25-50
Pretreatment: Tris EDTA pH9.0, 15 minutes Pressure Cooker or 30-60 minutes water bath at 95°-99°C
Incubation Time and Temp: 30-60 minutes @ RT
Detection: Refer to the detection system manual

* Result should be confirmed by an established diagnostic procedure.



FFPE human breast cancer stained with anti-BCA225 using DAB

References:

1. Distribution of BCA-225 in Adenocarcinomas An Immunohistochemical Study of 446 Cases. Timothy S Loy, et al. American Journal of Clinical Pathology 96(3):326-9, 1991.
2. Immunocytochemical Distribution of a Breast Carcinoma Associated Glycoprotein Identified by Monoclonal Antibodies. Ricardo Mesa-Tejada, et al. American Journal of Pathology, Vol. 130, No. 2, February 1988.