

**Mouse Anti-BARX1 [MD193]: MC0440, MC0440RTU7**

**Intended Use:** For Research Use Only

**Description:** BarX1 is a member of the Bar subclass of homeobox transcription factors. Studies of the Mouse and chick homolog suggest the encoded protein may play a role in developing teeth and craniofacial mesenchyme of neural crest origin. The protein may also be associated with differentiation of stomach epithelia. Down-regulation of Barx1 promotes HCC migration, invasion and metastasis, whereas up-regulation of Barx1 inhibits HCC migration, invasion and metastasis. The loss of Barx1 expression represents a prognostic biomarker in human HCC.

**Specifications**

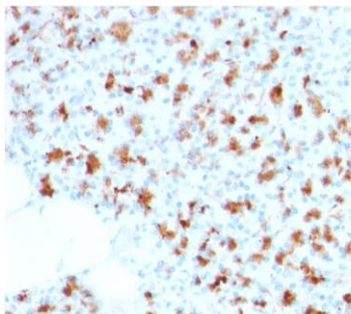
Clone:	MD193
Source:	Mouse
Isotype:	IgG1k
Reactivity:	Human
Immunogen:	Recombinant fragment of human BARX1 protein aa 155-254
Localization:	Nucleus
Formulation:	Purified antibody in PBS pH7.4, containing BSA and $\leq 0.09\%$ sodium azide (NaN <sub>3</sub> )
Storage:	Store at 2°- 8°C
Applications:	IHC
Package:	

Description	Catalog No.	Size
BARX1 Concentrated	MC0440	1 ml
BARX1 Prediluted	MC0440RTU7	7 ml

**IHC Procedure\***

Positive Control Tissue:	Pancreas, HepG2 cell lysate
Concentrated Dilution:	50-200
Pretreatment:	Tris EDTA pH9.0, 15 minutes Pressure Cooker or 30-60 minutes water bath at 95°-99°C
Incubation Time and Temp:	30-60 minutes @ RT
Detection:	Refer to the detection system manual

\* Result should be confirmed by an established diagnostic procedure.



FFPE human pancreas stained with anti-BARX1 using DAB

**References:**

1. Metabolism as an early predictor of DPSCs aging. Macrin, D.|Alghadeer, et al. Sci Rep. 9: 2195, 2019.
2. Loss of Barx1 promotes hepatocellular carcinoma metastasis through up-regulating MGAT5 and MMP9 expression and indicates poor prognosis. Guodong Wang, et al. Oncotarget. Sep 22; 8(42): 71867–71880, 2017.