

Rabbit Anti-Annexin 5/Annexin A5 Polyclonal: RC0246

Intended Use: For Research Use Only

Description: The annexin family of calcium-binding proteins is composed of at least ten mammalian genes and is characterized by a conserved core domain, which binds phospholipids in a Ca²⁺-dependent manner, and a unique amino-terminal region, which may confer binding specificity. Annexin family members have been implicated as regulators of such diverse processes as ion flux, endocytosis and exocytosis, and cellular adhesion. For example, the crystal structure of Annexin III has suggested a hydrophilic amino-terminus with possible Ca²⁺ channel activity. Similarly, Annexin V has ion channel properties. Annexin IV, also referred to as endonexin, functions to regulate Cl⁻ flux by mediating calmodulin kinase II (CaMKII) activity and Annexin V has been shown to regulate PKC activity. Annexin V is ubiquitously expressed at high levels in tissues and cells grown in tissue culture, while Annexin VIII exhibits a more limited distribution. Where co-expressed in the same tissues, Annexin VIII is often expressed at a 100-fold lower level than Annexin V. However, Annexin VIII is preferentially expressed in acute promyelocytic leukemia (APL) cells, which may relate to its role in hematopoietic cell differentiation.

Specifications

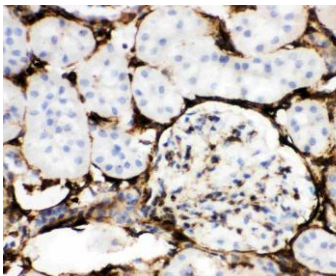
Clone:	Polyclonal
Source:	Rabbit
Isotype:	IgG
Reactivity:	Human, mouse, rat
Immunogen:	E.coli-derived human Annexin 5 recombinant protein
Localization:	Membrane
Formulation:	Antibody PBS pH 7.4, containing BSA and ≤ 0.09% sodium azide (NaN ₃)
Storage:	Store at 2°- 8°C
Applications:	IHC, Flow Cyt., ICC/IF, WB
Package:	

Description	Catalog No.	Size
Annexin 5/Annexin A5 Polyclonal Concentrated	RC0246	1 ml

IHC Procedure*

Positive Control Tissue:	Human breast carcinoma
Concentrated Dilution:	25-200
Pretreatment:	Citrate pH6.0 or EDTA pH8.0, 15 minutes using Pressure Cooker, or 30-60 minutes using water bath at 95°-99°C
Incubation Time and Temp:	Overnight @ 4°C
Detection:	Refer to the detection system manual

* Result should be confirmed by an established diagnostic procedure.



FFPE rat kidney tissue stained with anti-Annexin 5 using DAB

References:

1. In vitro patient-derived 3D mesothelioma tumor organoids facilitate patient-centric therapeutic screening. Mazzocchi AR, et al. Sci Rep 8:2886, 2018.
2. Morphological and proteomic analyses reveal that unsaturated guluronate oligosaccharide modulates multiple functional pathways in murine macrophage RAW264.7 cells. Xu X, et al, Mar Drugs. Mar 30;13(4):1798-818, 2015.
3. Pluripotency factor-mediated expression of the leptin receptor (OB-R) links obesity to oncogenesis through tumor-initiating stem cells. Feldman DE, et al. Proc Natl Acad Sci U S A 109:829-34, 2012.