

**Mouse Anti-ASRGL1 (Asparaginase Like 1) [CRASH/1289]: MC0143, MC0143RTU7**

**Intended Use:** For Research Use Only

**Description:** ASRGL1 (Asparaginase-like protein 1), also known as CRASH, is a 308 amino acid protein belonging to the Ntn-hydrolase family. Asparaginases utilize asparagine as a substrate to produce aspartic acid and ammonia. ASRGL1 has been identified as a autoantigenic protein that is present in the mid-piece of sperm after obstruction of the male reproductive tract. ASRGL1 is expressed highly in testis, but is also expressed in brain, kidney and gastrointestinal tissues. High levels of ASRGL1 have also been identified in ovarian, uterine and mammary tumors in comparison with normal tissues of the same origin.

**Specifications**

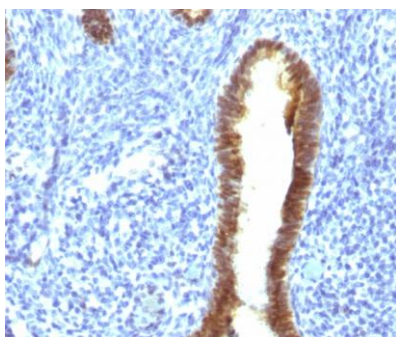
Clone:	CRASH/1289
Source:	Mouse
Isotype:	IgG1k
Reactivity:	Human
Immunogen:	Recombinant human ASRGL1 fragment
Localization:	Cytoplasm, nucleus
Formulation:	Purified antibody in PBS pH7.4, containing 0.2% BSA and ≤ 0.09% sodium azide (NaN3)
Storage:	Store at 2°- 8°C
Applications:	IHC
Package:	

Description	Catalog No.	Size
ASRGL1 Concentrated	MC0143	1 ml
ASRGL1 Prediluted	MC0143RTU7	7 ml

**IHC Procedure**

Positive Control:	Uterus or Cervix, Fallopian Tube, Endometrium, HeLa cells
Concentrated Dilution:	50-200
Pretreatment:	Tris EDTA pH9.0, 15 minutes using Pressure Cooker, or 30-60 minutes using water bath at 95°-99°C
Incubation Time and Temp:	30-60 minutes @ RT
Detection:	Refer to the detection system manual

\* Result should be confirmed by an established diagnostic procedure.



FFPE human uterus stained with anti-ASRGL1 using DAB

**References:**

1. Cailin Xue, et al. Front. Oncol., 25 June 2021. ASRGL1 Correlates With Immune Cell Infiltration in Hepatocellular Carcinoma and Can Serve as a Prognostic Biomarker.
2. Combined ASRGL1 and p53 immunohistochemistry as an independent predictor of survival in endometrioid endometrial carcinoma. Jutta Huvila, et al. Gynecol Oncol. 2018 Apr;149(1):173-180.

Doc. 100-MC0143  
Rev. A