

# Double Immunofluorescence

## DuoFluo™ IF DS Detection Kits

*Mouse, Rabbit, Rat Antibodies on Human, Mouse and Rat Tissues or Cell Smears*

Medaysis DuoFluo™ Immunofluorescence Double Staining Detection Kits are designed to simultaneously visualize two primary antibody-antigen complexes on the same tissue section. Autofluorescence Blocking Reagents are included in the kits to reduce/eliminate the autofluorescence on tissue sections to achieve superior signal/noise ratio. Mounting medium which contains DAPI is included and it will produce clear and shiny blue nuclear counterstaining.

The Fluor Dyes exhibit bright fluorescence intensity and photostability. Also it remains highly fluorescent over a broad pH range (pH 4-9). These make it an ideal choice for researcher's immunofluorescence applications. It uses proprietary fluorescence signal enhancing reagents which also contains agents to reduce non-specific background.

### Features

**Simultaneous detection of two antigens**

**Non-biotin signal amplification**

**Cleaner staining without background**

**Brighter & stable fluorescence signal**

**Improved photo-stability**

**Easy to follow protocol with RTU reagents in dropper bottles**

### Reference Table

Product	Technology	Available Dyes	Primary antibodies
DuoFluo™	Non-Biotin	Fluor 488, 550, 594, 650	Mouse, Rabbit, rat antibodies on human, mouse and rat tissues or cell smears

### Dyes Specifications

Color	Emissio	Fluor	Excitation/Emission*	Spectrally Similar Dyes
	Green	488	493/518	Alexa Fluor 488, FITC, DyLight 488
	Yellow	550	562/576	Alexa 546,555,Cy3,TRITC,DyLight 550
	Red	594	593/618	Alexa Fluor594,Texas Red,DyLight 594
	Red	650	652/672	Alexa Fluor 647, Cy5, DyLight 649

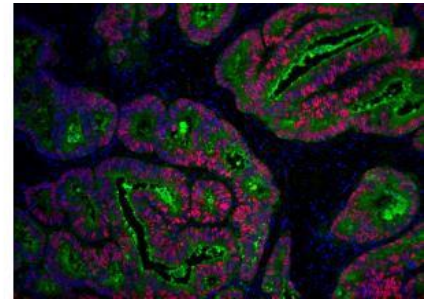
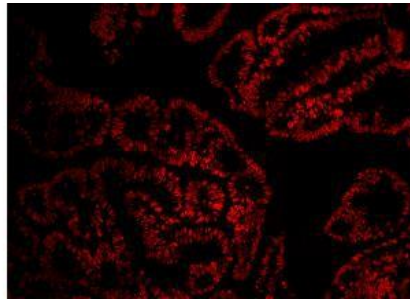
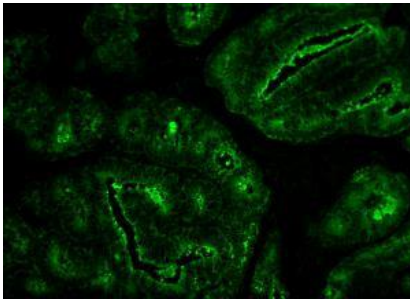
\*Excitation and emission maxima in nanometers (+/- 4nm) in phosphate-buffered saline (PBS)

# Medaysis

*Enable Innovation*

## Medaysis' DuoFluo™ IF DS Detection Kits (research use only)

Cat No	Description	Size	Antibody	Tissue
DF0001	DuoFluo™ 488+550 Mouse+Rabbit on Human	120 slides	Mouse + Rabbit	Human
DF0002	DuoFluo™ 488+594 Mouse+Rabbit on Human	120 slides	Mouse + Rabbit	Human
DF0003	DuoFluo™ 488+650 Mouse+Rabbit on Human	120 slides	Mouse + Rabbit	Human
DF0004	DuoFluo™ 488+550 Rat+Rabbit on Human	120 slides	Rat + Rabbit	Human
DF0005	DuoFluo™ 488+594 Rat+Rabbit on Human	120 slides	Rat + Rabbit	Human
DF0006	DuoFluo™ 488+650 Rat+Rabbit on Human	120 slides	Rat + Rabbit	Human
DF0007	DuoFluo™ 488+550 Mouse+Rat on Human	120 slides	Mouse + Rat	Human
DF0008	DuoFluo™ 488+594 Mouse+Rat on Human	120 slides	Mouse + Rat	Human
DF0009	DuoFluo™ 488+650 Mouse+Rat on Human	120 slides	Mouse + Rat	Human
DF0010	DuoFluo™ 488+550 Mouse+Rabbit on Mouse	120 slides	Mouse + Rabbit	Mouse
DF0011	DuoFluo™ 488+594 Mouse+Rabbit on Mouse	120 slides	Mouse + Rabbit	Mouse
DF0012	DuoFluo™ 488+650 Mouse+Rabbit on Mouse	120 slides	Mouse + Rabbit	Mouse
DF0013	DuoFluo™ 488+550 Rabbit+Rat on Mouse	120 slides	Rabbit + Rat	Mouse
DF0014	DuoFluo™ 488+594 Rabbit+Rat on Mouse	120 slides	Rabbit + Rat	Mouse
DF0015	DuoFluo™ 488+650 Rabbit+Rat on Mouse	120 slides	Rabbit + Rat	Mouse
DF0016	DuoFluo™ 488+550 Mouse+Rabbit on Rat	120 slides	Mouse + Rabbit	Rat
DF0017	DuoFluo™ 488+594 Mouse+Rabbit on Rat	120 slides	Mouse + Rabbit	Rat
DF0018	DuoFluo™ 488+650 Mouse+Rabbit on Rat	120 slides	Mouse + Rabbit	Rat



Human colon cancer FFPE tissue stained by mouse anti-p53 & rabbit anti-CEA, visualized by DF0001 (DuoFluo™ 488+550 Mouse+Rabbit on Human) simultaneously.

Left: Green shows clear luminal membrane and cytoplasmic staining of rabbit anti-CEA.

Middle: Red shows clear nuclear staining of mouse anti-p53.

Right: Color combination. Green: rabbit anti-CEA; Red: mouse anti-p53; Blue: DAPI nuclear counterstain.

Medaysis Company  
 2401 Monarch Street  
 Alameda, CA 94501  
 USA  
 Tel: 510-509-3153  
 Toll Free: 888-608-3167  
[www.medaysis.com](http://www.medaysis.com)